

2025 Annual Security and Fire Safety Report

**Klamath Falls, Portland Metro and
Dental Hygiene at Chemeketa Community College**

Crime and Fire Statistics for 2022, 2023 and 2024



Oregon TECH

Oregon Institute of Technology

2025 ANNUAL SECURITY AND FIRE SAFETY REPORT
KLAMATH FALLS, PORTLAND METRO AND THE DENTAL HYGIENE
PROGRAM AT CHEMEKETA COMMUNITY COLLEGE

Introduction.....	7
Preparation and Disclosure of Annual Crime Statistics.....	7
Clery Geography.....	7
Confidentiality of Victims/Survivors.....	7
Distribution and Availability of the Current Report.....	7
Reportable Crimes.....	8
Excluded Crimes.....	8
Security Policies, Procedures and Programs.....	8
Campus Environment.....	9
Campus Safety is a Shared Responsibility.....	9
Security Awareness and Crime Prevention	10
Incident Reporting	10
Important Phone Numbers.....	10
Personal Safety.....	10
Property Protection.....	11
Bicycle Theft.....	11
Office Security and Key Control.....	12
Parking Safety.....	12
Threatening Situation.....	12
Security Cameras.....	12
Campus Safety Tips.....	13
Campus Safety Services.....	13
Daily Crime Log	13
Crime Prevention and Safety Programs.....	13
Campus Safety and Klamath Falls Police Department.....	14
Campus Safety and the Wilsonville Police Department	15
Campus Safety and the Dental Hygiene Program at Chemeketa Community College	15
Crime Prevention and Education.....	16
Reporting a Crime.....	16
Response to a Report	16

Reporting to Meet Disclosure Requirements	17
Voluntary Confidential Reporting	17
Pastoral and Professional Counselors	17
Building Access and Safety.....	17
Security of Campus Grounds.....	18
Security Considerations Use in the Maintenance of Campus Facilities	18
On Campus Housing Safety.....	18
Monitoring and Recording of Criminal Activity by Students at Non-campus Locations of Recognized Student Organizations	18
Emergency Response and Evacuation Procedures	19
OT Alert and Emergency Communications	19
How OT Alert Works.....	19
How OT Alert will be used.....	20
Timely Warnings.....	20
Evacuation Drills and Procedures.....	21
Missing Student Notification.....	23
Student Conduct, Disciplinary Responsibility and Sanctions.....	23
Notification to Victims of Violence	24
Title IX Investigations and Disciplinary Action.....	24
Victim Notification.....	24
Appeal Procedure.....	24
Appeal of Decisions Reached Through Hearing Proceedings.....	24
Other University Policies.....	25
Drug Free School and Workplace Programs.....	25
Notice of Nondiscrimination.....	25
Drug Free Schools and Communities Act	25
Alcohol and Drug Policy.....	26
Firearms, Munitions and Explosives.....	26
Violence Against Women Act Legislation.....	26
Clery Crime Definitions and Terminology.....	26
Consent.....	27
Evaluate and Communicate Your Intentions	27
Clery Act Hate/Bias Crimes.....	28
Other Crime Definitions.....	29
Campus Security Authorities.....	30

Who Are Campus Security Authorities.....	30
Examples of Campus Security Authorities.....	30
Requirements that Campus Security Authorities be Identified, Notified and Trained	30
The Role of a Campus Security Authority	30
If You Are Sexually Assaulted.....	31
For Students:.....	31
For Employees:.....	31
Rape Evidence Collection Examination.....	32
General Medical Attention.....	32
For Immediate Counseling.....	32
Additional Reporting Information	33
Jeanne Clery Disclosure of Campus Security Policy and Campus Crime Statistics Act.....	33
Clery Act Definitions: Domestic Violence, Dating Violence, Sexual Assault and Stalking.....	33
Jurisdictional Definitions	34
How to Be an Active Bystander	35
Risk Reduction	35
Prevention Programs	36
Primary Prevention and Awareness Programs	37
Ongoing Prevention and Awareness Campaigns	37
Procedures Victims Should Follow	38
Involvement of Law Enforcement and Campus Authorities.....	39
Reporting Domestic Violence, Dating Violence, Sexual Assault and Stalking.....	39
Procedures the University Will Follow.....	39
Assistance for Victims: Rights and Options	41
Rights of Victims and the Institution's Responsibility For Orders of Protection	41
Accommodations and Protective Measures Available for Victims	43
On and Off Campus Services for Victims	43
Confidentiality	45
Adjudication of Violations	46
Types of Disciplinary Proceedings Utilized, Hearings and Evidence	46
Campus Sex Crimes Prevention Act and Sex Offender Registration	53
Hazing Policy Statement	53
Health Professional Reporting of Crimes and Annual Crime Statistics.....	53

Campus Safety Activity Report - *Klamath Falls*

Criminal Offenses54

Hate Crimes54

Campus Safety Activity Report - *Portland Metro*

Criminal Offenses57

Hate Crimes57

Campus Safety Activity Report - *Chemeketa Community College Dental Hygiene*

Criminal Offenses59

Hate Crimes60

Fire Safety Report.....62

Fire Safety at Oregon Tech.....62

Policy Statement.....62

Fire Safety Systems in On-Campus Housing.....62

Student Housing Fire Safety Systems.....63

Fire Extinguishers.....63

Response to Fire and/or Alarms.....63

Training.....64

Fire Statistics for 2024, 2023 and 202264

Procedures for Student Housing Evacuation in Case of a Fire65

Plans for Improvement to Fire Safety66

Campus Crime Awareness and Campus Security Act

This annual report is provided in compliance with the federal Campus Crime Awareness and Campus Security Act of 1990 (Title II, Public Law 101-542, Nov. 1990) and the Higher Education Opportunity Act of 2008. Information is reviewed and updated on an annual basis. A complete listing by category can be obtained on the Campus Safety web page. If you have questions, comments or remarks, contact Campus Safety at campus.safety@oit.edu.



Annual Security and Fire Safety Report

Introduction

The Jeanne Clery Disclosure of Campus Security Policy and Campus Crime Statistics Act, otherwise known as the Clery Act, requires that post-secondary schools participating in Title IV Student Financial Aid Programs publish a statistical report of crimes occurring on or near the institution's campus and provide information about security policies, procedures and programs. This report informs the campus community of reported crimes occurring in the three previous calendar years, 2022, 2023 and 2024.

Preparation and Disclosure of Annual Crime Statistics

Campus Safety coordinates the development of this report, in conjunction with the university's Clery Compliance Committee and other stakeholders, to comply with the Clery Act. The report is prepared in cooperation with the Klamath 911 Emergency Communications District (Klamath 911), the Klamath Falls Police Department, the Klamath County Sheriff's Office, the Oregon State Police, the Clackamas County Sheriff's Office and the Marion County Sheriff's Office. The statistics represented in this report include both crimes reported to local law enforcement as well as campus crime, arrest and referral statistics reported to Campus Safety, Student Affairs, Housing and Residence Life, the Integrated Student Health Center, Student Involvement and Belonging, Athletics, the Title IX Coordinator along with other designated campus officials.

Clery Geography

Clery Geography consists of four categories that are defined as follows:

- **On-Campus Property:** All buildings and grounds owned and controlled by Oregon Tech that are reasonably contiguous and used in direct support of, or in a manner related to, Oregon Tech's educational purposes
- **On-Campus Student Housing:** All residential facilities owned or controlled by Oregon Tech at the Klamath Falls campus to include the Residence Hall and three Village apartment buildings. The Portland Metro and Chemeketa Community College campuses do not offer residential facilities.
- **Public Property:** Includes thoroughfares, streets, sidewalks and parking facilities that are within or immediately adjacent to and accessible from campus.
- **Non-Campus Property:** Includes buildings or property owned or controlled by Oregon Tech that are not within the same reasonably contiguous geographic area but are used in direct support of educational purposes and are frequently used by students.

Confidentiality of Victim/Survivors

This data, when recorded and compiled by the university's Clery Coordinator for the purposes of Clery Act reporting, contains information specific to and necessary for Clery Act reporting requirements to include date, location, and crime. When collecting and compiling statistics, the Clery Coordinator does not request or record any identifying information about a victim, as such information is not required for Clery Act crime disclosure. The Clery Coordinator is the Custodian of Records for all Clery Act associated records. These records include the crime log, available in paper copy format to the public at the Campus Safety office located in room 231 in Cornett Hall, and Clery Act reportable crime statistics which are provided to the public and the Department of Education annually, for the current and prior two years. The university is required to keep Clery Act associated records for seven years.

Distribution and Availability of the Current Report

An e-mail notification is sent to all enrolled students along with all current employees members providing the web site to access this report. Paper copies of the report may also be obtained at the Campus Safety office located on the Klamath Falls campus in Cornett Hall room 231, the Resilience, Emergency Management and Safety administrative office in Snell Hall room 006, or by calling 541.885.1111 to request a copy. All prospective employees may obtain a copy of this report from Human Resources in Snell Hall on the Klamath Falls campus or by calling 541.885.1074. Printed copies of the report can be printed as requested or needed for those at both the Portland Metro campus and the Oregon Tech dental hygiene clinic at Chemeketa Community College.

Reportable Crimes

The Clery Act requires that participating schools collect data on a specific list of crimes. These crimes are listed within this document and are defined by the current reporting requirements. In the case of liquor, drug and weapon offenses, the numbers are categorized into two groups based on violations of Oregon law. The first set of numbers is for those who were referred for disciplinary action by Oregon Tech and the second is for those individuals who were arrested or issued a citation in lieu of arrest. This information represents the actual impact of liquor, drug and weapons violations occurring in the campus community even when the incident does not result in an arrest.

Excluded Crimes

In some cases an incident that is reported as a crime may not be included in this report. Each of the following five standards must be met for an incident to be included in the annual report:

- **Reported to the Proper Authorities:** The incident must be reported to law enforcement or a person who, according to the Clery Act, is defined as a Campus Security Authority. A person designated as a Campus Security Authority includes more than individuals employed by Campus Safety. The term is applied to any person who works for the university in a paid or volunteer status and has significant responsibilities for student activities. For example, student advisors, resident assistants, coaches for university athletics and people who perform security functions at campus recreational facilities are considered Campus Security Authorities.
- **Listed Crimes:** The crime must be one of those listed in the Clery Act as a reportable crime.
- **Reportable Area:** The crime must have occurred in one of the reportable areas per Clery Act regulations. Specifically, the crime must have occurred on or within the institutions Clery Geography (On Campus, On Campus Student Housing, Public Property and Non-Campus property). Every reportable crime occurring within the boundaries of campus is in a reportable area. Perimeter streets are described as a "Sidewalk – Street – Sidewalk." This means that a reportable crime occurring on the sidewalk on either side of a perimeter street is reportable as are incidents occurring in the street. An incident occurring in a building on the distant side of a perimeter street would not be included.
- **Made in Good Faith:** For an incident to be included there must be a determination that the report is made in good faith. Supporting evidence makes this determination easy, but such evidence is not always available. In such a case the credibility of the person making the report is considered. When the incident is reported to the university through a law enforcement agency, the Campus Security Authority would reasonably believe this determination has already been made.
- **Founded:** For an incident to be included there must be a determination that the report is founded. In the case of a particular incident, if law enforcement can determine that the incident could not have occurred or did not occur, i.e., a false report, the crime would not be included in the annual report.

Security Policies, Procedures and Programs

This report provides information about security policies, how to report crimes, the jurisdiction and arrest authority of Campus Safety personnel and information about campus educational programs. These documents are gathered in this report to assist you in your efforts to arrive at a more complete understanding of the campus climate as it relates to the issues of personal safety, crimes occurring on or near campus and the resources available. The collection of data and the evaluation of the data in the preparation of this report is a lengthy process requiring the involvement of numerous campus departments and external agencies. The intent of this information is to provide individuals with the information necessary to make an informed and reasoned decision about personal safety while at Oregon Tech.

Campus Environment

Oregon Tech educates students from all over the world, serving as the only accredited public polytechnic university in Oregon. Oregon Tech consists of the following locations:

Klamath Falls

The main campus, consisting of 190 acres, 20 buildings and a stadium, is in Klamath Falls, Oregon, a high-desert community on the eastern slope of the Cascade Mountains. The city's metropolitan population, including the outlying county communities, is about 45,000. Oregon Tech maintains an "open campus" with no physical barriers between the university and the community.

Portland Metro

The Portland Metro Campus is in Wilsonville, Oregon, a suburb of the city of Portland. Oregon Tech's high demand bachelor's and master's degrees are accessible to traditional full-time students, community college transfer students, working professionals, and busy adults by offering day, evening, weekend, hybrid and online courses.

Chemeketa Community College – Dental Hygiene Program

Oregon Tech partners with Chemeketa Community College, located in Salem, Oregon, to offer a Bachelor of Science degree in Dental Hygiene. This program, located in building 8, room 109B, on the Chemeketa campus, prepares students for entry into the dental hygiene profession.

Campus Safety is a Shared Responsibility

No university campus or community is totally risk-free. Each person must contribute to fostering a safe learning environment by using reasonable precautions and practicing crime prevention. These measures help reduce an individual's exposure to unforeseen events as well as opportunities for criminal activity on campus.

Campus Safety reports to the Executive Director of Resilience, Emergency Management and Safety (REMS) within Finance and Administration and is a unit within the REMS portfolio. Campus Safety applies a proactive approach to incorporating visibility, education, prevention, and response to campus incidents. Campus Safety is located on the Klamath Falls campus and provides safety services for both the Klamath Falls and Portland Metro campuses. In-person security patrols of the Portland Metro campus are provided by contracted security personnel, while in-person patrols of the dental hygiene program facility in Salem are provided by the Chemeketa Community College Public Safety Department.

Campus Safety programs at Oregon Tech are comprehensive and inclusive, ensuring a focus on the entire campus community to include students, employees, and guests. It is Oregon Tech's desire to create and promote an open environment that encourages learning and freedom among all who attend or visit the university. Safety is an important part of the educational and occupational experience at the university. Individuals who are the victim of a crime, witness a crime or suspect a crime is taking place within the campus boundaries or adjacent properties, should report the event immediately to the following:

- Klamath Falls campus: Campus Safety at 541.891.2143 or Klamath County 911.
- Portland Metro campus: Clackamas County Sheriff's Office 911, Wilsonville Police at 503.682.1012, Campus Safety at 541.891.2143 or the on-duty contracted security officer at 971.264.4175
- Chemeketa Community College Dental Hygiene Program: Chemeketa Community College Public Safety at 503.399.5023 or the Willamette Valley Communications Center 911

Everyone needs to be an engaged member of the campus community, reporting crimes and pointing out safety concerns to the appropriate departments or agencies. It is a collective responsibility to help keep the campus crime free. Everyone plays an important role in keeping the campus community safe.

Members of the campus community are encouraged to report concerns and all campus crimes to Campus Safety. Students may also report concerns to Student Affairs, the Diversity/Title IX Officer, Housing and Residence Life or a Campus Security Authority. An online campus incident report is available through: <https://www.oit.edu/student-affairs/report-it>.

Security Awareness and Crime Prevention

Oregon Tech provides the following contact information for students and employees:

Incident Reporting

- For emergencies or a crime being committed, call 911.
- Report all crimes, no matter how minor they may seem:
 - Klamath Falls campus, contact the on-duty Campus Safety Officer at 541.891.2143.
 - Portland Metro campus, contact the on-duty security officer at 971.264.4175, the Clackamas County Sheriff's Office non-emergency line at 503.655.8211 or Campus Safety at 541.891.2143.
 - Chemeketa Community College campus, contact Public Safety at 503.399.5023.
- Report any unsafe conditions, or any malfunctioning lights, doors or windows, to Campus Safety at 541.891.2143. To report maintenance issues:
 - Klamath Falls campus report to Facilities Services at 541.885.1693.
 - Portland Metro campus report concerns to the Campus Operations Manager at 503.821.1291.
 - Chemeketa Community College, contact Facilities and Operations at 503.399.5157.
- Optional online reporting through for both Klamath Falls and Portland Metro at: <https://www.oit.edu/student-affairs/report-it>.
- Online reporting at Chemeketa Community College can be found at: <https://www.chemeketa.edu/complaints-and-concerns>.

Important Phone Numbers

- Emergencies: 911
- Campus Safety Non-Emergency: 541.885.1111
- Campus Safety On-Duty Officer: 541.891.2143
- Portland Metro On-Duty Security Officer: 971.264.4175
- Clackamas County Sheriff's Office Non-Emergency: 503.655.8211
- Wilsonville Police Department: 503.682.1012
- Chemeketa Community College Public Safety: 503.399.5023

Personal Safety

Survivors of crimes are not responsible for their victimization, regardless of their actions. Not all crimes can be prevented with preparation and readiness. Campus community members can improve their personal safety by taking the following precautions:

- If working or studying late, arrange to leave with a friend. Lock the building doors and windows if working late/alone.
 - Klamath Falls campus, contact Campus Safety at 541.891.2143 for an escort.
 - Portland Metro campus, contact the onsite security at 971.264.4175.
 - Chemeketa Community College campus, contact Public Safety for a safety escort at 503.399.5023.
- Refrain from using elevators with people who look out of place or behave in a strange or threatening way. Always immediately report suspicious people or conditions.
- If followed, go to a high-visibility area where individuals may be present.
- Be alert to any suspicious persons or vehicles.
- Carry a fully charged cell phone with pre-programmed emergency numbers.

Property Protection

- Never leave valuables unattended (backpacks, wallets, purses, keys, computers, phones, electronic devices, etc.).
- Engrave personal property, such as electronic or sporting equipment, with an Oregon Driver's License number, like this: **OR123456DL**. A secondary option would be to engrave an owner applied number, or OAN. This would be an engraved number easily identifiable to the owner.
- Keep a written record of all personal valuables, including descriptions and serial numbers. It is evidence that the property belongs to the rightful owner

Bicycle Theft

- Never leave a bicycle unlocked. It only takes a moment to steal an unlocked bicycle.
- U-lock style locks are recommended. Cables and padlocks can be cut easily and quickly.
- Lock the bicycle frame onto a bike rack. Front wheels can be easily removed, and the bike stolen.

Bicycle registration is not mandatory on campus, although on the Klamath Falls campus Housing and Residence Life does provide this service to on-campus residents if requested.



Office Security and Key Control

- Never leave purses, wallets or other valuables unattended. Lock personal items in a drawer or closet or carry them.
- Do not leave keys unattended, in plain sight on a desk or in a top drawer where they could be easily accessed.
- Never loan out university issued keys, proximity cards, fobs or any other form of entrance you have been granted.
- Request proof of authorization from people asking for confidential information or from delivery or repair people who want to enter a restricted area.
- If keys are lost or stolen contact:
 - Klamath Falls: Notify Campus Safety and Facilities Services immediately, or Housing staff if they are keys to their area.
 - Portland Metro: Notify the Portland Metro Campus Operations Manager at 503.821.1291.
 - Chemeketa Community College: Notify Chemeketa Community College Public Safety at 503.399.5023.

Parking Safety

- Lock vehicles at all times. Remove all valuables from your vehicle. Leave valuables at home, carry them, or lock them in the trunk.
- When returning to a vehicle, have the keys out while approaching. Check the interior of the vehicle before going inside.
- Report suspicious persons:
 - Klamath Falls campus, notify Campus Safety immediately of any suspicious people seen loitering in the parking lots or in any campus facilities.
 - Portland Metro campus, report suspicious people to either the on-duty security officer, Portland Metro employees or the Clackamas County Sheriff's Office.
 - Chemeketa Community College, report suspicious people to the Public Safety Department or Willamette Valley Communications Center 911.

Threatening Situation

- If physically challenged by an individual, attract attention by yelling loudly or using a whistle.
- If using self-defense tactics or equipment, run away as soon as the attacker is disabled.

Oregon Tech policy OIT-50-010 prohibits the use of weapons on any Oregon Tech campus. Please refer to ORS 166.360 for the definition of a weapon. Policy OIT-50-010 can be found at <https://www.oit.edu/human-resources/policies/students>, while ORS 166.360 can be found at https://www.oregonlegislature.gov/bills_laws/ors/ors166.html.
- Situational awareness is vital when it comes to personal safety. Run scenarios in your head and pre-plan your response to threatening situations.
- If confronted by someone who wants your property, give it to them. Your valuables are not worth your personal safety.
- Try to get an accurate description of the assailant. If a vehicle is involved, get the license number and call 911, Campus Safety, the on-duty security officer or Chemeketa Community College Public Safety (depending on your location).

Security Cameras

- In 2025, Oregon Tech initiated an Enterprise-Wide Security Camera Technology Initiative. Over 450 new security cameras have been installed in public access spaces, inside buildings, in various parking lots and along the exterior of buildings. The project is slated for completion by the end of 2025 and covers both the Klamath Falls and Portland Metro campuses.

Campus Safety Tips

When crimes occur on campus, Campus Safety may inform the campus community and offer ways for the campus community to take precautions to avoid becoming a victim of crime. In addition to offering ways to avoid becoming a victim, Campus Safety may also request any information campus community members may have regarding the mentioned crime. Contact Campus Safety for more information at campus.safety@oit.edu or 541.885.1111. On the Chemeketa Community College campus, the Public Safety Department will be responsible for informing the community when crimes occur and they can be reached at 503.399.5023.

Campus Safety Services

The mission of Campus Safety is to provide for the safety and security of the campus community including employees, students and visitors. Campus Safety promotes safety and security on campus through educational programs, emergency and non-emergency response services, problem solving and enforcement of appropriate laws, rules and regulations.

The university employs full-time Campus Safety Officers as well as part-time Reserve Campus Safety Officers. Students assist with issuing temporary parking permits and other safety-related responsibilities. Campus Safety operates 24 hours a day, seven days a week, responding to incidents on the Klamath Falls campus, including building alarms, crimes, emergencies, injuries, illnesses, accidents, safety hazards and calls for assistance.

Campus Safety routinely collaborates with local law-enforcement agencies to ensure a coordinated approach to campus safety and security. Campus Safety also coordinates with the contracted security provider and the Wilsonville Police Department as needed for incidents occurring on the Portland Metro campus. Safety services at Chemeketa Community College are provided by their Public Safety Department.

Daily Crime Log

Campus Safety maintains a Daily Crime Log which is available to the public for review at the Campus Safety Office, located in room 231 in Cornett Hall on the Klamath Falls campus, from 8 AM – 5 PM Monday through Friday, excluding holidays and campus closures due to inclement weather. A version of the Daily Crime Log is also available online at www.oit.edu/campus-safety. Daily Crime Logs will also be available for review at the Portland Metro campus as well as the dental hygiene clinic at Chemeketa Community College.

Crime Prevention and Safety Programs

During the 2024-2025 academic year, Oregon Tech offered approximately 37 crime prevention and security awareness programs. Topics such as personal safety, Residence Hall security, active assailant response, office safety, drug and alcohol abuse awareness and sexual assault prevention are examples of programs offered during the academic year. All crime prevention and security awareness programs encourage students and employees to be responsible for their own security and for the security of others.

Student Involvement & Belonging (SIB)

The Treehouse, a program through Student Involvement and Belonging, held events in 2024 to include the following:

- The Bandana Project: decorate a bandana and stand in solidarity while helping raise awareness about sexual violence against migrant farmworker women in the United States. Educational pamphlets/information cards were shared about this issue.
- Denim Day: Denim Day is acknowledged in April, during Sexual Assault Awareness Month (SAAM). The purpose of this event is to show that no matter what you are wearing, it is not an invitation to be assaulted. People all over campus were encouraged to wear a denim clothing article to show solidarity with assault victims. There was a table set up with a jean jacket where students and employees could write messages on it to show solidarity as well.
- SAAM Breaking Plates: for Sexual Assault Awareness Month (SAAM), anyone can come and write their experiences or feelings on a plate and break it. It is said that smashing plates symbolize the smashing of the old-world order to make way for a new one. When you break a plate it can represent your own personal struggles with change, as well as the difficult process of breaking free from past events or feelings.

Integrated Student Health Center

During 2024-2025 academic year, the Integrated Student Health Center hosted a Safe Spring Break event, provided suicide prevention and sexual assault prevention programs in support of the Title IX office and trained Campus Safety employees on suicide intervention, depression and autism spectrum disorders.

Title IX

Because Title IX awareness is crucial to the health and wellness of the Oregon Tech community, annual training on Title IX and related laws is required for university students, employees and volunteers at all campus locations. The university's Board of Trustees also attends annual Title IX training. Members of the Title IX Office, including the Title IX Coordinator and Deputy Title IX Coordinators receive additional training, as do Hearing Officers and Advisors. The Title IX office provided on-line/virtual Title IX training opportunities throughout 2024 as well as in-person training covering topics such as allyship with the LGBTQIA+ community, dating violence and healthy relationships and unconscious bias. Online training can be found through the Oregon Tech Title IX web page at <https://www.oit.edu/title-ix/training>.

Housing and Residence Life

To reach their goal of providing a safe living environment for students at Oregon Tech, Housing and Residence Life offers specific training to their staff and informational meetings for all residential students. Housing and Residence Life student staff return to campus two weeks prior to the arrival of the general student population. During this time, all student staff received training on being a mandatory reporter, suicide prevention, fire evacuation and safety, de-escalation of stressful situations, how to report to and interact with Campus Safety and more. Housing and Residence Life partners with the Title IX Coordinator, Campus Safety, staff from the Integrated Student Health Center and the Dean of Students to provide this training effectively. At the beginning of the fall term, Housing and Residence Life holds an All-Residential Meeting to share information about campus policies along with tips on how to keep the living community safe and secure. Floor meetings are held throughout the academic year to address residential concerns and remind students of safety protocols and policies.

Athletics

The Athletics Department has multiple training sessions for staff and student athletes. As an example, 220 student-athletes received Title IX training from the Title IX coordinator in October of 2024 and the two years prior and the Athletics staff were trained in Title IX, mandatory reporting and "coaching with character" via the National Association of Intercollegiate Athletics. The Director of Athletics conducts training with the student-athletes, covering department policies on hazing, bullying, drugs and alcohol.

Resilience, Emergency Management and Safety (REMS)

Resilience, Emergency Management and Safety (REMS) provided strategic leadership over the university's business continuity, campus safety, emergency management, environmental health and safety, parking and radiation safety portfolio. The department collaborates with key stakeholders to build organizational and individual resilience to adverse events, business disruptions, emergencies, hazardous environmental conditions, public safety incidents and safety risks.

Environmental Health and Safety

The Environmental Health and Safety office within REMS provided CPR/First Aid training to student staff, has given presentations on environmental health and safety topics such as lab safety and chemical safety and has participated with Campus Safety in providing safety information to new and returning residential students during 2024.

Campus Safety

Campus Safety within REMS provided community training to both the general campus community by term and as requested by various campus clubs and departments. Training in self-defense, active assailant/active shooter (utilizing an ALICE certified instructor and incorporating the Standard Response Protocol) and office safety was provided. Additionally, Campus Safety Officers staffed information tables during various campus events, to include, but not limited to, New Wings student registration and Admitted Students Day.

Campus Safety and Klamath Falls Police Department

Oregon Tech and the Klamath Falls Police Department have a long history of coordination and cooperation in responding to crime on campus and areas adjacent to campus. Oregon Tech maintains a strong working relationship with state and local police agencies in addition to the Klamath Falls Police Department, to include the Klamath County Sheriff's Office and the Oregon State Police. There are no written agreements or memorandums of understanding regarding any topics, including the investigation of criminal incidents, between Oregon Tech and the Klamath Falls Police Department.



Campus Safety is generally considered the first responder to campus incidents. All uniformed Campus Safety Officers are Oregon Tech employees and under ORS 164.205 (5), are designated as lawful persons in charge with authorization to direct persons to leave the campus and initiate subsequent law-enforcement intervention for crime and university violations.



Five full-time Campus Safety Officers have been commissioned by the university under ORS 352.118 and can make probable cause arrests while on duty and operating within the university boundaries and jurisdiction. Campus Safety also employs part-time, non-commissioned Reserve Officers who have citizen's arrest authority as granted by Oregon law under ORS 133.225.

Campus Safety Officers have jurisdiction to operate on Oregon Tech owned and controlled property only and have the authority to enforce state, local and federal laws as well as institutional policies. All Campus Safety Officers are trained in first aid and CPR procedures, the use of Automatic External Defibrillators (AED's) and in the use of the Combat Application Tourniquet (CAT). Officers conduct foot and vehicular patrols of the university campus 24 hours a day, seven days a week.

The Klamath Falls Police Department is the primary law enforcement agency in the city of Klamath Falls. They have jurisdiction and will respond to campus upon request to assist as needed. The Klamath County Sheriff's Office and Oregon State Police also respond to calls from campus, as needed or warranted.

Any major crime incidents on campus will generally be handled by or include the Klamath Falls Police Department in cooperation with Campus Safety personnel. The Klamath Falls Police Department will conduct investigations upon request from Campus Safety and make arrests as the responsible law-enforcement jurisdiction.

Campus Safety and the Wilsonville Police Department (a division of the Clackamas County Sheriff's Office)

Campus Safety provides crime prevention consultation services, investigation assistance and safety training at the Portland Metro campus. Crimes can be reported to Academic Affairs, the Assistant Dean of Students, the Vice Provost for Research and the Vice President of Student Affairs. Oregon Tech and the Wilsonville Police Department coordinate and cooperate in responding to crime and incidents on campus and in areas adjacent to campus.

Campus Safety and Oregon Tech Dental Hygiene Program at Chemeketa Community College

Campus Safety provides limited investigative and consultation services to the dental hygiene program at Chemeketa Community College. Chemeketa Community College Public Safety, in conjunction with the Marion County Sheriff's Office, provide the vast majority of safety services to the dental hygiene program.

Crime Prevention and Education

Campus Safety, employees and students continually work together on personal safety and preparedness to assist others in time of need. Every individual is responsible for taking basic precautions, such as walking in pairs at night, locking office and car doors and securing personal valuables when unattended. Campus Safety is available to meet with individuals, groups and clubs to discuss personal safety, crime-prevention methods and related issues. Campus Safety actively supports crime prevention through several activities. Campus Safety Officers provide educational talks, workshops and information exchange opportunities throughout the academic year.

Campus Safety personnel provide the following crime-prevention services:

- Daily incident and crime reports
- Crime information and data collection that is disseminated to local police agencies
- Resident Advisor support
- Orientation programming for new students
- Outreach and awareness activities
- Personal safety training

When campus crimes occur, Campus Safety may notify the campus community as needed to educate and inform members as a crime deterrent. If you have information or questions, contact Campus Safety at 541.885.1111.

Reporting a Crime

Klamath Falls Campus: In the event of a crime or emergency, contact Campus Safety at 541.891.2143. This number will reach the on-duty Campus Safety Officer. Dialing 911 will connect the caller to Klamath 911, who will coordinate a response by the appropriate public safety agency.

Portland Metro Campus: In the event of a crime or emergency, contact the on-duty contracted security officer or 911. Calling 911 will place you in touch with the Clackamas County Sheriff's Office 911 Center, who will coordinate a response by the appropriate public safety agency. If needed, the on-duty Campus Safety Officer in Klamath Falls can be contacted to provide guidance and assistance. The on-duty officer can be reached at 541.891.2143.

Chemeketa Community College: In the event of a crime or emergency, contact the Chemeketa Community College Public Safety Department or 911. Public Safety can be reached at 503.399.5023.

Response to a Report

For both the Klamath Falls and Portland Metro campuses, reports can be filed 24 hours a day, 7 days a week by calling the on-duty Campus Safety Officer at 541.891.2143. All reported crimes or violations of institutional policies will be investigated by Campus Safety and may become a matter of public record. Depending on the nature of the reported incident, Campus Safety reports could be forwarded to, among others, to the Dean of Students, the Director of Housing and Residence Life, the Klamath Falls Police Department or the Wilsonville Police Department (at the Portland Metro campus).

If outside assistance is required at the Klamath Falls campus due to the nature of an incident, Campus Safety will contact Klamath County 911 to request a response from the Klamath Falls Police Department and/or Klamath County Fire District #1. At the Portland Metro campus, contracted security, Campus Safety or Portland Metro staff will contact Clackamas County 911 to request a response from either the Wilsonville Police Department or other appropriate local public safety agency. At Chemeketa Community College, all calls for assistance should be directed to the Public Safety Department or the appropriate local public safety agency via 911.

If a sexual assault or rape should occur at either the Klamath or Portland Metro campuses, staff on the scene, to include Campus Safety, will offer the victim a wide variety of services. For victim services on the Chemeketa Community College campus, refer to their website at <https://www.chemeketa.edu/about/parking-public-safety/victim-assistance>.

Reporting to Meet Disclosure Requirements

It is helpful when members of the community immediately report crimes or emergencies to Campus Safety or any of the following:

- On-duty Campus Safety Officer at 541.891.2143
- Vice President of Student Affairs/Dean of Students at 541.885.1011
- Director of Housing and Residence Life at 541.885.1094
- Title IX Coordinator at 541.885.0182

Members of the Oregon Tech community are encouraged to promptly report crimes and emergencies to Campus Safety, Oregon Tech staff, Chemeketa Community College staff and/or the appropriate law enforcement agency, whether that be the Wilsonville Police Department, the Klamath Falls Police Department or the Marion County Sheriff's Office, including when the victim either is unable to make or report or does not wish to make such a report. Notifying Campus Safety and the departments mentioned above allows for the inclusion of the reported crime or emergency in the annual statistical disclosure, as well as allowing for an assessment of the incident to determine if issuing a Timely Warning Notice is necessary.



Voluntary Confidential Reporting

If you are the victim of a crime and do not want to pursue action through either the criminal justice system or the university judicial process, you may still want to consider making a confidential report. With your permission, Campus Safety Officers can file a report on the details of your incident without revealing your identity (except to the Title IX Coordinator in the event of a reported sex offense or sexual harassment). A confidential report helps Oregon Tech comply with your wish to keep the matter confidential while taking steps to enhance the future safety of yourself and others. With such information, Oregon Tech can keep an accurate record of the number of incidents involving students, employees and visitors; determine where there is a pattern of crime involving a particular location, method or assailant; and alert the campus community to potential danger. Reports filed in this manner are counted and disclosed in the annual crime statistics for the institution.

Refer to the Chemeketa Community College website at <https://www.chemeketa.edu/complaints-and-concerns> for information on the Chemeketa Community College voluntary confidential reporting policies and procedures.

Pastoral and Professional Counselors

Professional Counselors, when acting as such, are not considered to be a Campus Security Authority for Clery Act purposes and are not required to report crimes for inclusion in the annual disclosure of crime statistics. The professional counselors at Oregon Tech are encouraged, if and when they deem it appropriate, to inform people being counseled of the procedures to report crimes on a voluntary confidential basis to Campus Safety. A professional counselor is an employee of an institution whose official responsibilities include providing psychological counseling to members of the institution's community and who is functioning within the scope of his or her license or certification. During this reporting period Oregon Tech did not use the services of pastoral counselors nor does Oregon Tech employ pastoral counselors.

Refer to the Chemeketa Community College website at <https://www.chemeketa.edu/students/student-services/counseling-services> for more information on their counseling services.

Building Access and Safety

Klamath Falls Campus

Campus buildings are open Monday through Friday, 8 AM to 5 PM, with access to buildings limited during evenings and weekends. Campus Safety Officers confirm campus buildings are being secured beginning at 5 PM, except when evening classes meet, or special events are occurring. All buildings are locked after evening activities are completed. Unauthorized entry to, or use of university facilities, including buildings and grounds, is prohibited. Building access during weekends, holidays and non-business hours requires the use of either an assigned electronic fob or hard key or access granted by the on-duty Campus Safety Officer. If working alone or in a building after normal work hours or on weekends, individuals should notify Campus Safety of their entry time and location by calling the on-duty Campus Safety Officer at 541.891.2143. Immediately report all strangers or suspicious activity in your building to Campus Safety.

Portland Metro Campus

The Portland Metro Campus is open Monday through Friday, 7 AM to 10 PM and Saturdays from 7AM to 6 PM during the term. During the summer and breaks, the building is open Monday through Friday from 9 AM to 6 PM and is closed on Saturday and Sunday. The building is locked after evening activities are completed.

Unauthorized entry to, or use of university facilities, including the building and grounds, is prohibited. Building access for special use or use during non-business hours requires prior approval. Individuals working alone or who will be in the building after normal work hours or on weekends notify the Portland Metro Campus Operations Manager or the on-duty security officer. Immediately report all strangers or suspicious activity to the Portland Metro Campus Operations Manager, the on-duty security officer or the on-duty Campus Safety officer at the Klamath Falls campus.

Chemeketa Community College

Refer to the Chemeketa Community College website for information pertaining to building hours and safety at <https://www.chemeketa.edu/about/parking-public-safety>

Security of Campus Grounds

The university is committed to campus safety and security. Parking lots, pedestrian walkways, high- traffic areas, buildings, exterior lighting and grounds are checked during routine patrols. Patrols occur during daytime and evening shifts on the Klamath Falls campus and during select hours at the Portland Metro campus. Doors are secured each evening.

Security Considerations Used in the Maintenance of Campus Facilities

Oregon Tech maintains campus facilities in a manner that minimizes hazardous and unsafe conditions. Shrubs, trees and vegetation are trimmed regularly by Facilities Services or contracted landscaping personnel depending on the campus (Klamath Falls and Portland Metro). Members of the campus community are encouraged to report all hazards, exterior-lighting deficiencies or grounds problems to the following:

- **Klamath Falls Campus:** Facilities Maintenance Services at 541.885.1690.
- **Portland Metro Campus:** Facilities Maintenance Services at 503.821.1262.
- **Chemeketa Community College:** Facilities, Operations and Capital Projects at 503.399.5157.

On Campus Housing Safety

It should be noted that neither Chemeketa Community College nor the Portland Metro campus provide on-campus housing for students. Campus Safety Officers routinely patrol the campus housing facilities, respond to calls for service and assist students as needed. Public areas are accessible to residents and their guests. All campus residential facilities are locked 24/7. Students and staff living and working in the buildings have access cards that provide access to the facilities. The only exception to the facilities being continuously secured is for an all-student event held in a residential facility or for maintenance work that includes moving items that make access cumbersome. In these cases, buildings are secured again as soon as the event is over or at the end of each workday/period. Residents should be certain that doors shut and lock behind them and not let people enter behind them. Access is limited only to the extent that residents abide by established security procedures.

Resident Assistants (RAs) are present in all residential facilities and conduct hall checks every evening. An RA is available Monday-Friday, 5 PM-8AM and all weekend, or anytime the Housing Office is closed. Students who will be hosting a guest for the night must submit a "Guest Request Form" through the housing online portal (eRezlife). Students should accompany their guests while they are in public areas of the residential facilities.

Students should call the on-duty RA and/or Campus Safety at 541.891.2143 any time they need assistance or observe unusual circumstances or suspicious persons.

Monitoring and Recording of Criminal Activity by Students at Non-campus locations of Recognized Student Organizations

Oregon Tech does not have officially recognized student organizations at either the Klamath Falls, Portland Metro or Chemeketa Community College campuses that own or control housing facilities outside of the Oregon Tech core campuses. Neither the Klamath Falls Police Department nor the Wilsonville Police Department is used to monitor and record criminal activity since there are no non-campus locations of student organizations.

Emergency Response and Evacuation Procedures

Oregon Tech maintains an Emergency Operations Plan that outlines responsibilities of campus units during emergencies. This plan outlines incident priorities, campus organization and specific responsibilities of departments or positions. University departments are responsible for developing emergency response and business continuity plans for their areas and staff. REMS provides resources and guidance for the development of these plans.

- **Klamath Falls:** Emergencies should be reported to Campus Safety at 541.891.2143 or 911.
- **Portland Metro:** Emergencies should be reported to the on-duty contracted security officer or 911. If needed, the on-duty Campus Safety Officer can be contacted at 541.891.2143.
- **Chemeketa Community College:** Emergencies should be report to Public Safety at 503.399.5023 or 911.

In conjunction with other emergency response agencies, Oregon Tech conducts emergency response drills and exercises, such as tabletop exercises and tests of the emergency notification systems on campus. These tests are designed to assess and evaluate the emergency plans and capabilities of the institution. Each test is documented, including a description of the exercise, the date and time of the exercise and whether it was announced or unannounced.

The campus publicizes emergency response and evacuation procedures via email throughout the year in conjunction with a test (exercise and drill) that meets all the requirements of the Higher Education Opportunity Act.

Information pertaining to the emergency response and evacuation procedures at the Chemeketa Community College campus can be found on their website at <https://www.chemeketa.edu/about/parking-public-safety/emergency-response>.

OT Alert and Emergency Communications

REMS, Information Technology Services, Marketing, Communications and Public Affairs and Campus Safety, working in conjunction with administrative personnel, supports the OT Alert system to promptly notify the campus community in the event of an emergency

The OT Alert mass notification system contacts the Oregon Tech community in the event of an emergency by sending messages through the following platforms:

- Cell Phone
- E-mail
- Phone (land line)
- SMS (text messaging)
- Face to face communication may be used if any of these systems fail



OT Alert is not used to send non-emergency, routine or spam messages. Individuals can report emergencies occurring at Oregon Tech by calling Campus Safety at 541.891.2143 or by dialing 911.

How OT Alert Works

Oregon Tech is committed to providing a safe learning and working environment for students and its employees. With this commitment comes a responsibility to notify the campus community of emergency situations if they arise on Oregon Tech campuses. OT Alert fulfills this commitment with emergency information available to the campus community and by providing emergency information and notification to a large percentage of persons on campus. OT Alert will promptly provide emergency information to the campus community and beyond once an emergency or threat is confirmed and the appropriate officials on campus are notified for purposes of emergency response and possible evacuation. In the event of an emergency, Oregon Tech will initiate and provide, without delay, immediate notifications to the appropriate segment(s) of the campus community upon confirmation of a significant emergency or dangerous situation involving an immediate threat to the health or safety of students, employees and visitors.

If Oregon Tech receives a confirmed emergency or dangerous situation involving an immediate threat at or near an Oregon Tech campus, Campus Safety will confirm the given emergency via both on and off campus resources. These resources may include, but are not limited to, Campus Safety Officers, the Executive Director of Resilience, Emergency Management and Safety or emergency response agencies, such as the Klamath Falls Police Department, Klamath County Fire District One, the Wilsonville Police Department and other responsible persons.

Campus Safety, the Executive Director of Resilience, Emergency Management and Safety and other campus partners will convene to determine the content of the message and will use some, or all, of the systems described below to communicate the threat to the Oregon Tech community or to the appropriate segment of the community, if the threat is limited to a particular building or segment of the population.

Oregon Tech will, without delay and taking into account the safety of the community, determine the content of the notification and initiate the notification system, unless issuing a notification will, in the judgement of the first responders (including, but not limited to, Campus Safety, the Klamath Falls Police Department, Klamath County Fire District #1, the Wilsonville Police Department, etc.), compromise the efforts to assist a victim or to contain, respond to or otherwise mitigate the emergency.

Once an emergency is confirmed, the scope of the emergency is determined, and the content of the alert is finalized, an alert will be sent out via OT Alert. The mass notification system will automatically send the alert message to all employees and students and to those persons who have signed up and/or updated their emergency information on the OT Alert system. The alert is then delivered to landlines, cellular phones and through e-mail accounts.

All Oregon Tech students and employees are automatically enrolled into the OT Alert system with their primary phones and Oregon Tech email. University community members are also encouraged to provide additional contacts (secondary email or phone number) and to regularly update their information at www.oit.edu/ot-alert.

In the event of an on-going emergency on or near the Oregon Tech campus, follow-up information will be disseminated via the same process used to send out the initial alert through OT Alert. Reasons for an updated OT Alert message may include further detailed information on the emergency, changes in location of the emergency, the emergency being deemed contained, concluded or no longer a threat.

Local news media may be utilized to disseminate emergency information to members of the larger community, including neighbors, parents and other interested parties. The larger community can also access emergency information via the Oregon Tech home page at www.oit.edu.

If there is an immediate threat to the health and welfare safety of students and employees occurring on campus, the university will follow its emergency notification procedures. When Oregon Tech issues an emergency notification, a timely warning is not required to be issued for the same incident or situation; however, Oregon Tech must provide adequate follow-up information to the community as needed.

How OT Alert will be used

Situations for which OT Alert will be used (but not limited to):

- Campus closing
- Building emergencies
- Potential life-threatening situations on campus
- Inclement weather conditions

The campus community can be confident that an emergency message is genuine by the following sender identification: Phone: 541.885.1000 or e-mail: OT Alert (do not reply)

For information on emergency notifications and alerts on the Chemeketa Community College campus, visit their website at <https://www.chemeketa.edu/about/parking-public-safety/emergency-response>

Timely Warnings

In an effort to provide timely notice to the campus community in the event of a Clery Act crime reported within the Oregon Tech Clery Geography (On Campus, Public Property and Non-campus property), in the judgement of the Executive Director of Resilience, Emergency Management and Safety, or designee, that may pose a serious or ongoing threat to members of the community, Campus Safety will issue Timely Warnings. Campus Safety will generally issue Timely Warnings for the following crimes:

- Major incidents of arson.
- Aggravated assault (cases involving assaults among known parties, such as two roommates fighting which results in an aggravated injury, will be evaluated on a case-by-case basis to determine if the individual is believed to be an ongoing threat to the larger Oregon Tech community).

- Ongoing instances of burglaries or motor vehicle thefts that occur in a reasonable proximity to one another.
- Criminal homicide.
- Robbery involving force or violence (cases including pick pocketing and purse snatching will typically not result in the issuance of a Timely Warning but will be assessed on a case-by-case basis).
- Sexual assaults (considered on a case-by-case basis depending on the facts of the case, when and where the incident occurred, when it was reported and the amount of information known by Campus Safety). In cases involving sexual assault, they are often reported long after the incident occurred, thus there is no ability to distribute a “timely” warning notice to the community. All cases of sexual assault, including stranger and non-stranger/acquaintance cases, will be assessed for potential issuance of a Timely Warning.
- Other Clery Act crimes as determined necessary by the Executive Director of Resilience, Emergency Management and Safety or their designee in their absence.

Crimes that would not present a continuing threat and therefore might not merit a Timely Warning, include the following:

- An assault between two individuals who have a disagreement and know each other. This may be an isolated event and presents no ongoing threat to the community.
- In the case of a late report in which the delay precludes the possibility of issuing a Timely Warning to the community. Late reports will be considered on a case-by-case basis depending on when and where the incident occurred, when it was reported and the amount of information available.
- Crimes in which the perpetrator has been apprehended, thereby eliminating the threat.
- Crimes in which an identified perpetrator is only targeting specific individuals to the exclusion of others.

In the event a Timely Warning is disseminated, it may include the following information:

- Type of crime.
- Date, time, and location of the crime.
- Brief description of the incident.
- Available suspect information.
- Safety tips to help with the risk of being involved in a similar incident.

Campus Safety may, in some circumstances, issue Timely Warnings when there is a pattern of crimes against persons or property. The Executive Director of Resilience, Emergency Management and Safety will make the determination, in consultation with other university officials, if a Timely Warning is required. Anyone with information warranting a Timely Warning or emergency response notification for the Oregon Tech campuses may contact Campus Safety at 541.885.1111 or 541.891.2143.

Timely Warning Notices will be distributed as soon as pertinent information is available, in a manner that withholds the names of victims as confidential and with the goal of aiding in the prevention of similar occurrences.

Timely Warning Notices are typically written and distributed by University Advancement or their designee through the Marketing, Communications and Public Affairs department in consultation with Campus Safety, the Executive Director of Resilience, Emergency Management and Safety and the Vice President of Finance and Administration. Some Timely Warning Notices, depending on the nature of the notice, may be reviewed by the University President prior to distribution through the Vice President of University Advancement. Timely Warning Notices will be issued to the campus community via email list serves to all Oregon Tech assigned email accounts, to include employees and students. The institution is not required to issue a Timely Warning with respect to crimes reported to a pastoral or professional counselor. As previously noted, during this reporting period Oregon Tech did not use the services of pastoral counselor.

For Timely Warning information for the Chemeketa Community College campus, please visit <https://www.chemeketa.edu/about/parking-public-safety/emergency-response>

Evacuation Drills and Procedures

The purpose of evacuation drills is to prepare building occupants for a safe and coordinated evacuation in case of fire or other type of emergency. Evacuation drills are used to educate and train occupants on fire safety issues specific to their building. During a drill, occupants practice drill procedures and familiarize themselves with the location of exits and the sound of the fire alarm. In addition to evacuations procedures during the drills, the process also provides Oregon Tech with an opportunity to test the operation of the fire alarm system components. Fire drills are conducted annually in campus facilities with the exception of four times per year in on-campus housing facilities. It should be noted that both the Portland Metro Campus and Chemeketa Community College have no on-campus housing facilities.

General Evacuation Procedures

When a fire alarm is activated or if you are instructed to evacuate, leave your location immediately and proceed to the nearest exit. As you leave the building, look for the green and white signage indicating a designated Evacuation Assembly Point location. If you are the first to recognize a fire situation, activate the alarm, evacuate to a safe location using the nearest exit and notify Campus Safety at 541.891.2143, on-duty Portland Metro security officer or dial 911.

- Remain calm.
- DO NOT use elevators. Use the stairs instead.
- Assist the physically impaired. If they are unable to exit without using an elevator, assist them with moving to a safe area of refuge near a stairwell and immediately inform Campus Safety, the on-duty security officer, Portland Metro or Chemeketa Community College staff or the responding emergency response agencies.
- Proceed to the nearest designated Evacuation Assembly Point at both the Klamath Falls and Portland Metro campuses. These are areas marked by green and white signage with the words "Evacuation Assembly Point". Keep all walkways clear for emergency vehicles.
- Assist with evacuating all personnel are out of a building if able.
- Do not re-enter the building.

Shelter-in-Place Procedures: What it Means to "Shelter-in-Place"

If an incident occurs and the buildings or areas around you become unstable, or if the air outdoors becomes dangerous due to toxic or irritating substances, it is usually safer to stay indoors, because leaving the area may expose you to that danger. To "shelter-in-place" means to make a shelter of the location that you are in and with a few adjustments this location can be made safer and more comfortable until it is safe to go outside.

Basic "Shelter-in-Place" Guidance

If an incident occurs and the building you are in is not damaged, stay inside in an interior room until you are told it is safe to come out. If your building is damaged, take your personal belonging (purse, wallet, access card, etc.) and follow the evacuation procedures for your building (close your door, proceed to the nearest exit and use the stairs instead of the elevators). Once you have evacuated, proceed to the nearest designated Evacuation Assembly Point, which are areas marked by green and white signage with the words "Evacuation Assembly Point." If Campus Safety, police or fire department personnel are on the scene, follow their directions.

How You Will Know to "Shelter-in-Place"

Oregon Tech adopted the Standard Response Protocol, or "SRP", in fall of 2022. The SRP provides 5 easy to understand actions that can be taken during an emergency situation. Posters outlining the actions associated with each of the 5 steps, which include "Hold", "Secure", "Lockdown", "Evacuate" and "Shelter", are in all university facilities to include classrooms, common areas, labs and hallways. A notification announcing the need to "Shelter" may come from several sources, including Campus Safety, Housing staff, other university employees, local law enforcement and/or the university's emergency alert system, OT Alert.

How to "Shelter"

A "Shelter" is called when specific protective actions are needed based on a threat or hazard. When informed of the need to "Shelter", you should use the appropriate safety strategy for the hazard being encountered. The following are safety strategies that can be used when being ordered to "Shelter":

- If you are inside and the hazard is outside of your building, stay where you are. If you are outside and the hazard is also outside, move away from the hazard and towards either building or shelter that could provide protection from the hazard. You can also move to a designated Evacuation Assembly Point that is out of the hazard area. In either case, follow instructions from Campus Safety or other emergency personnel on scene, who will know better the nature of the hazard and the proper way to shelter from it.
- Locate a room to shelter inside that should be:
 - An interior room;
 - Above ground level; and
 - Without windows or with the least number of windows. If there is a large group of people inside a particular building, several rooms may be necessary.
- Shut and lock all windows (tighter seal) and close exterior doors.
- Turn off air conditioners, heaters and fans.

- Close vents to ventilation systems as you are able. Facilities Services will turn off the ventilation as quickly as possible on both the Klamath Falls and Portland Metro campuses, while Chemeketa Community College Facilities staff will address their ventilation systems.
- Make a list of the people with you and ask someone (hall staff, faculty, or other staff) to call the list into Campus Safety so they know where you are sheltering. If only students are present, one of the students should call in the list.
- Turn on a radio or TV and listen for further instructions. Keep your cellphone on so you can receive OT Alerts or other official communication from the university with updates on the incident.
- Make yourself comfortable.

For evacuation and drill information for the Chemeketa Community College campus, please visit <https://www.chemeketa.edu/about/parking-public-safety/emergency-response>

Missing Student Notification

In accordance with the Higher Education Opportunity Act of 2008, Oregon Tech has established procedures for missing student notification and campus response. This missing student procedure applies to any student who lives in an on-campus student housing facility, regardless of their age, status, or whether they have registered as a confidential contact person. Students, employees, parents/legal guardians, Campus Security Authorities, or any other person who is aware that a student, who resides on campus, is missing should report that information immediately to Campus Safety at 541.891.2143. Missing students can also be reported to Housing and Residence Life staff, the Vice President for Student Affairs, Dean of Students, the Athletics Director, or the Integrated Student Health Center staff.

Any university official who receives a report that a student is missing shall immediately contact Campus Safety. If the student lives in on-campus housing, Campus Safety will open an official investigation and retain status as the primary response unit. A welfare check of the student's on-campus residence will be made. If the student lives off campus, the appropriate law enforcement agencies will be contacted. All reasonable efforts will be made to locate the student to determine their status and well-being.

Oregon Tech Housing and Residence Life maintains confidential contact information for students who live in an on-campus housing facility. Each student who lives in on-campus housing must annually identify two contact persons whom the university will notify if the student is determined to be missing after a 24-hour period. When students are informed of their option to provide a confidential contact, they are advised that their contact information will remain confidential, accessible only to authorized campus officials and law enforcement and will not be disclosed outside of a missing student investigation.

Campus Safety is responsible for determining whether a student is missing. Once a student is determined to be missing for 24 hours, Oregon Tech will notify the designated contact person. Students are advised that if a student is under 18 years of age and not emancipated, Oregon Tech must notify a custodial parent or guardian within 24 hours of the determination that the student is missing, in addition to notifying any additional contact person designated by the student. Students are also advised that for all missing students, Campus Safety will notify the Klamath Falls Police Department within 24 hours of the determination that the student is missing, unless the Klamath Falls Police Department was the entity that made the determination that the student is missing. This notification will be made even if the student has not registered a contact person or is an emancipated minor. As mentioned previously in this report, neither Chemeketa Community College nor the Portland Metro campus offer on-campus student housing.

Student Conduct, Disciplinary Responsibility and Sanctions

The Student Code of Conduct applies to all Oregon Tech students regardless of which campus they attend. Disciplinary sanctions as serious as suspension or expulsion from the university or eviction from university housing may be imposed against any students found guilty of committing, attempting to commit or intentionally assisting in any of the offenses listed in the Student Conduct Code and the Student Housing Handbook. The responsibility for the campus discipline system is delegated from the State Board of Higher Education to the Vice President for Student Affairs through the President. The Vice President for Student Affairs further delegates authority for student conduct to the Dean of Students, Housing and Residence Life and designated hearing officers. A hearing officer is a university employee who is an officially designated administrator, faculty member, or staff member.



The goal is to resolve cases closest to the point of infraction for maximum educational benefit. The Student Code of Conduct in its entirety, to include prohibited conduct, the disciplinary process and sanctions can be found at: [Student Conduct | Oregon Tech \(oit.edu\)](#). The Housing Student Handbook can be found at: [Housing & Residence Life | Oregon Tech \(oit.edu\)](#).

Notification to Victims of Crimes of Violence

Oregon Tech will, upon written request, disclose to the alleged victim of a crime of violence, or a non-forcible sex offense, the report on the results of any disciplinary proceeding conducted by Oregon Tech against a student who is the alleged perpetrator of such crime or offense. If the alleged victim is deceased as the result of such crime or offense, the next of kin of such victim shall be treated as the alleged victim for purposes of this paragraph.

Title IX Investigations and Disciplinary Action

Victim Notification

In cases involving allegations that a crime of violence or non-forcible sex offenses, victims are entitled to know the results of any disciplinary proceedings. Both the accused and complainant will be notified in writing of the results of any hearing involving such allegations. Victims of a crime of violence, sexual assault, non-forcible sex offense, or stalking will be provided with notification in writing of the final outcome of the disciplinary hearing, including the sanctions imposed against the alleged perpetrator. Victims of sexual harassment will be provided with notification in writing of the final outcome of the disciplinary hearing, including those sanctions that directly relate to the harassed student (e.g., no contact order, suspension, expulsion, etc.). Please review the Student Code of Conduct for more information. It can be found at [Student Conduct | Oregon Tech \(oit.edu\)](#).

Appeal Procedure

An appeal is a review of the record of the original hearing, not a new hearing. It serves as a procedural safeguard for the student. The burden of proof is on the appellant, who must show that one or more of the listed grounds for appeal has merit. A student or group will not appear before the review panel unless specifically requested to do so by the panel.

Appeal of Decisions Reached Through Hearing Proceedings

Any outcome decided by the Student Hearing Commission may be appealed to the University President by either the respondent or the complainant.

- Students will be asked for their current address at the original hearing. A letter containing the hearing panel's decision will be mailed to this address by certified mail, delivered in person or sent electronically to the institutional email address within two working days following the hearing. Students may also pick up a copy of the decision at the Office of Student Affairs. Appeals must be submitted in writing to Office of Student Affairs by 5 PM within seven university working days of the original hearing. Failure to file an appeal within the prescribed time constitutes a waiver of any right to an appeal.
- The appeal must cite at least one of the following Appeals Criteria as the reason for appeal and provide supporting argument(s) as to why an appeal should be granted on these grounds. Appeals grounds include the following:
 - The hearing was not conducted in conformity with prescribed procedures and substantial prejudice to the complaint or the respondent resulted;
 - The evidence presented at the previous hearing does not support the finding that was made; that is, whether there were facts in the case that, if believed by the fact finder, were sufficient to support the Panel's findings;
 - New evidence that could substantially affect the outcome of the previous hearing has been discovered since that hearing. The evidence must not have been available at the time of the original hearing. Failure to present evidence that was available is not grounds for an appeal under this provision;
 - The sanction is not appropriate for the violation. This provision is intended to be utilized when a determined sanction is inherently inconsistent with university procedures. Simple dissatisfaction with a sanction is not grounds for overturning a sanction under this provision.
- The President will review the record of the original hearing, including documentary evidence and issue a finding as to the merits of the criteria cited as the reason for appeal.
 - If the appeals panel finds there is no merit to any of the grounds appealed, it will issue a finding as such.
 - If the appeals panel is presented with new evidence that could not have been presented at the original

hearing, the matter may be remanded to the original hearing panel for a rehearing

- If the sanction is determined to be inappropriate for the violation, the appeals panel may recommend the sanction be modified by the vice president for student affairs and state the reasons for that recommendation.
- If the President finds there is no merit to any of the submitted grounds for appeal, that decision shall be final. The final decision will be communicated in writing by the Office of the President or Office of Student Affairs to the complainant and the respondent. The decision will normally be communicated within ten university working days of receiving the written recommendation, but it may take longer during university recesses, in a complex case, or other reasonable circumstances.
- If the President recommends modifying the outcome or the sanction, the final decision will be communicated in writing by the Vice President for Student Affairs to the complainant and the respondent. The decision will typically be communicated within ten university working days of receiving the written recommendation, but it may take longer during university recesses, in a complex case or other reasonable circumstances. The decision of the University President shall be final.

All Oregon Tech students, regardless of which campus they attend, fall under the Title IX process and resources provided by Oregon Tech. For information on Title IX processes and resources at Oregon Tech, refer to the following website at:

<https://www.oit.edu/title-ix>.

Other University Policies

While all Oregon Tech students and employees, regardless of which campus they are on, fall under the purview of the following Oregon Tech policies. Oregon Tech employees and students at the Chemeketa Community College campus may have reason to access, or attempt to access, services at the Chemeketa campus, so information links to Chemeketa's policies have been included below.

Drug Free School and Workplace Programs

Oregon Tech complies with the provisions of the federal Drug Free Workplace Act of 1989 and the Drug Free School and Communities Act Amendments of 1990. University policies adopted to implement these federal requirements provide for the possibility of serious disciplinary action in the event of alcohol abuse or illicit drug use on campus or in connection with university functions, or for mandatory referral to approved rehabilitation or assistance programs. Copies of the university's policy statements are available online at www.oit.edu/hr (policy OIT-30-034). Information on Chemeketa Community College's drug-free program can be found at <https://www.chemeketa.edu/about/human-resources/employee-resources/alcohol-drug-free-program>

Notice of Nondiscrimination

Oregon Institute of Technology does not discriminate on the basis of race, color, ethnicity, national origin, gender, disability, age, religion, marital status, sexual orientation or gender identity in its programs and activities. The following office is designated to handle inquiries and complaints regarding this non-discrimination policy: Affirmative Action Officer, Oregon Tech, 3201 Campus Dr., Klamath Falls, OR 97601-8801; 541.885.1108; Fax 541.851.5200. Hard copies of policies may be requested through Student Affairs in 217 College Union. Information on Chemeketa Community College's nondiscrimination notices can be found at <https://www.chemeketa.edu/about/legal/annual-non-discrimination-statement>

Drug Free Schools and Communities Act

In compliance with the Drug Free Schools and Communities Act, Oregon Tech publishes information regarding the institute's prevention programs related to drug and alcohol abuse prevention which include standards of conduct that prohibit the unlawful possession, use and distribution of alcohol and illegal drugs on campus and at institution-associated activities; sanctions for violations of federal, state and local laws and institute policy; a description of health risks associated with alcohol and other drug use and abuse; and a description of available counseling, treatment, rehabilitation and/or re-entry programs for Oregon Tech students and employees.

A complete description of these topics, as provided in the institute's annual notification to students and employees, is available online at: <https://www.oit.edu/campus-safety/safety-info/policies>. Information on Chemeketa Community College's drug-free program can be found at <https://www.chemeketa.edu/about/human-resources/employee-resources/alcohol-drug-free-program>.

Alcohol and Drug Policy

Oregon Tech participates in the “Drug Free Schools and Community Act” (Public Law 101-226, Sec. 22) and is committed to providing an environment that maximizes the potential for a drug and alcohol-free educational experience. The unlawful possession, use, sale or consumption of alcoholic beverages on campus is prohibited, except in designated over 21 spaces in on campus housing and at specially sanctioned occasions in the College Union). Furnishing alcoholic beverages to minors is prohibited on campus by state law and university policy. Campus Safety is responsible for the enforcement of state underage drinking laws and enforcement of Federal and State drug laws.

The unlawful use, possession, sale, giving or exchanging of illegal drugs or controlled substances is prohibited on campus by state law and university policy. Persons violating these prohibitions are subject to discipline by the university, including possible suspension, expulsion and/or filing of criminal charges. The Integrated Student Health Center provides assessment and referral services to students and serves as an alcohol and drug abuse information and educational resource. These and other Oregon Tech policies can be found on the Office of Human Resources web page at: <https://www.oit.edu/human-resources>. Campus Safety has primary responsibility for the enforcement of Federal and State drug laws.

The Oregon Tech campus is designated as “Drug Free” campus. Enforcement of State and Federal drug laws are conducted by law enforcement agencies including the Klamath Falls Police Department and the Wilsonville Police Department. Violators could be subject to university disciplinary action if they are affiliated with the university.

Firearms, Munitions, and Explosives

Except as expressly authorized by law or university regulations, possession, use or the threatened use of firearms, fireworks, ammunition, explosives, chemicals or any objects that may be used as a weapon are strictly prohibited on university property or at university-sponsored or supervised activities. Concealed weapons are prohibited, even with an authorized concealed carry permit. Certified law enforcement officers are the only individuals authorized to possess firearms while on campus. Information on Chemeketa Community College’s policies and procedures relating to firearms, munitions and explosives can be found at <https://www.chemeketa.edu/students/student-rights-responsibilities>.

Violence Against Women Act Legislation

On March 7, 2013, President Obama signed into law a bill that strengthened and reauthorized the Violence Against Women Act (VAWA), which affords additional rights to campus victims of sexual violence, dating violence, domestic violence and stalking. Included in the VAWA legislation were numerous amendments to the Clery Act requiring updates to policies and procedures and collection and reporting of statistics for sexual assaults, dating violence, domestic violence and stalking. As a result of the passage of VAWA, schools are now required to collect data and report statistics for the additional crimes of dating violence, domestic violence and stalking as well as additional hate/bias crime categories of gender identity, ethnicity and national origin.

Clery Act Crime Definitions and Terminology

Under the Clery Act, Oregon Tech annually distributes statistics in an annual report and submits statistics to the Department of Education on the reported occurrences of the following offenses:

Murder and Non-Negligent Manslaughter: The willful (non-negligent) killing of one human being by another.

Manslaughter by Negligence: The killing of another person through gross negligence.

Sexual Assault: An offense that meets the definition of rape as used in the FBI’s UCR program or an offense that meets the definition of fondling, incest or statutory rape as used in the FBI’s NIBRS program.

Sex Offenses: Any sexual act directed against another person, without the consent of the victim, including instances where the victim is incapable of giving consent.

- **Rape:** The penetration, no matter how slight, of the vagina or anus with any body part or object, or oral penetration by a sex organ of another person, without the consent of the victim.
- **Fondling:** The touching of the private body parts of another person for the purpose of sexual gratification, without the consent of the victim, including instances where the victim is incapable of giving consent because of his/her age or because of his/her temporary or permanent mental or physical incapacity.

- **Incest:** sexual intercourse between persons who are related to each other within the degrees wherein marriage is prohibited by law.
- **Statutory Rape:** sexual intercourse with a person who is under the statutory age of consent.

Domestic Violence

- **Federal Definition:**
A felony or misdemeanor crime of violence committed:
 - By a current or former spouse or intimate partner of the victim
 - By a person with whom the victim shares a child in common
 - By a person who is cohabitating with or has cohabitated with the victim as a spouse or a partner
 - By a person similarly situated to a spouse of the victim under the domestic violence laws of the jurisdiction in which the crime of violence occurred, or
 - By any other person against an adult or youth victim who is protected from that person's acts under the domestic or family violence laws of the jurisdiction in which the crime of violence occurred.

Dating Violence (Federal Definition): Violence committed by a person who is or has been in a social relationship of a romantic or intimate nature with the victim. The existence of such a relationship shall be determined based on the reporting party's statement and with consideration of the length of the relationship, the type of relationship and the frequency of interaction between the persons involved in the relationship.

Stalking:

- **Federal Definition**
 - Engaging in a course of conduct directed at a specific person that would cause a reasonable person to:
 - Fear for the person's safety or the safety of others; or
 - Suffer substantial emotional distress.
 - For the purposes of this definition:
 - Course of conduct means two or more acts, including, but not limited to, acts in which the stalker directly, indirectly, or through third parties, by any action, method, device or means, follows, monitors, observes, surveils, threatens, or communicates to or about, a person, or interferes with a person's property.
 - Substantial emotional distress means significant mental suffering or anguish that may, but does not necessarily, require medical or other professional treatment or counseling.
 - Reasonable person means a reasonable person under similar circumstances and with similar identities to the victim.

Consent

It is the responsibility of the parties involved to both give and receive consent in a clear, concise and mutually understood manner. Consent once given can be revoked at any time. Once consent is withdrawn, the sexual activity must cease immediately and all parties must obtain mutually expressed or clearly stated consent before continuing further sexual activity. Even if consent was given in the past, each new contact should clearly establish consent between everyone involved.

Evaluate and Communicate Your Intentions

Domestic Violence, Dating Violence, Stalking and Sexual Assault are issues that impact both women and men. Because the largest percentage of all university-related rapes, dating violence and stalking are committed by acquaintances, it is important that you decide what you want to happen in intimate situations.

Both women and men should consider the following:

- Pay close attention to what is happening around you. Clearly communicate your desires, limits and intentions to your date, partner or friend.
- Intercourse becomes rape when a person is under the influence of any intoxicant or controlled substance and is thereby prevented from resisting or consenting to the sexual contact. Be aware that alcohol and other drugs can impair your judgment; make you slow or unable to escape from a dangerous situation.

- Previous sexual contact, regardless of frequency, does not constitute consent for sexual activity in the present or future. A current or previous dating relationship does not constitute the basis for implied consent.
- Do not assume that sexual intercourse is permissible if a person is dressed in a certain way or is incapacitated and does not give consent.
- Assaultive behavior is never acceptable.

Robbery: The taking or attempting to take anything of value from the care, custody or control of a person or persons by force or threat of force or violence and/or by putting the victim in fear.

Aggravated Assault: An unlawful attack by one person upon another for the purpose of inflicting severe or aggravated bodily injury. This type of assault usually is accompanied by the use of a weapon or by means likely to produce death or great bodily harm.

Burglary: The unlawful entry of a structure to commit a felony or a theft.

Motor Vehicle Theft: The theft or attempted theft of a motor vehicle.

Arson: The willful or malicious burning or attempt to burn, with or without intent to defraud, a dwelling house, public building, motor vehicle or aircraft personal property of another kind.

Liquor Law Violations: The violation of state and local laws or ordinances prohibiting: the manufacture, sale, transporting, furnishing, possessing of intoxicating liquor; furnishing liquor to minor or intemperate person; using a vehicle for illegal transportation of liquor; drinking on a train or public conveyance; all attempts to commit any of the aforementioned. (Drunkenness and driving under the influence are not included in this definition.)

Drug Abuse Violations: Violations of state and local laws relating to unlawful possession, sale, use, growing, manufacturing and making of controlled substances.

Weapon Law Violations: The violation of laws or ordinances dealing with weapon offenses, regulatory in nature, such as manufacture, sale, or possession of deadly weapons; carrying deadly weapons, concealed or openly; furnishing deadly weapons to minors; aliens possessing deadly weapons; all attempts to commit any of the aforementioned.

(Crime definitions are from the Uniform Crime Reporting Handbook. Sex offense definitions are from the National Incident-Based Reporting System edition of the Uniform Crime Reporting Program).

Clery Act Hate/Bias Crimes

A hate crime is defined as any crime that manifests evidence that a victim was selected because of his/her actual or perceived race; gender; gender identity; religion; sexual orientation; ethnicity; national origin or disability. A hate crime is not a separate, distinct crime, but is the commission of a criminal offense which was motivated by the offender's bias. If the facts of the case indicate that the offender was motivated to commit the offense because of their bias against the victim's perceived race; gender; gender identity; religion; sexual orientation; ethnicity; national origin or disability, the crime is classified as a hate crime. For more information on the definition and classification of hate/bias crimes, see:

- **Bias:** Bias is a preformed negative opinion or attitude toward a group of persons based on their race, gender, gender identity, religion, disability, sexual orientation, ethnicity or national origin. Although there are many possible categories of bias, under the Clery Act, only the following eight categories are reported:
 - **Race:** A preformed negative attitude toward a group of persons who possess common physical characteristics (e.g., color of skin, eyes and/or hair; facial features, etc.) genetically transmitted by descent and heredity, which distinguish them as a distinct division of humankind (e.g., Asians, blacks, whites).
 - **Gender:** A preformed negative opinion or attitude toward a group of persons because those persons are male or female.
 - **Gender Identity:** A preformed negative opinion or attitude toward a person or group of persons based on their actual or perceived gender identity (e.g., bias against transgender or gender non-conforming

individuals).

- **Religion:** A preformed negative opinion or attitude toward a group of persons who share the same religious beliefs regarding the origin and purpose of the universe and the existence or nonexistence of a supreme being (e.g., Catholics, Jews, Protestants, atheists).
- **Sexual Orientation:** A preformed negative opinion or attitude toward a person or group of persons based on their actual or perceived sexual orientation.
- **Ethnicity:** A preformed negative opinion or attitude toward a group of people whose members identify with each other, through a common heritage, often consisting of a common language, common culture (often including a shared religion) and/or ideology that stresses common ancestry. The concept of ethnicity differs from the closely related term race in that "race" refers to grouping based mostly upon biological criteria, while "ethnicity" also encompasses additional cultural factors,
- **National Origin:** A preformed negative opinion or attitude toward a group of persons of the same race or national origin who share common or similar traits, languages, customs and/or traditions.
- **Disability:** A preformed negative opinion or attitude toward a group of persons based on their physical or mental impairments/challenges, whether such disability is temporary or permanent, congenital or acquired by heredity, accident, injury, advanced age or illness.

Other Crime Definitions

Oregon Tech is required to report statistics for hate/bias crimes by the type of bias for the prior listed offenses as well as the crimes of larceny, simple assault, intimidation and vandalism. The below listed crimes are not Clery Act reportable crimes unless the crime was motivated by bias:

Larceny-Theft: The unlawful taking, carrying, leading or riding away of property from the possession or constructive possession of another.

Simple Assault: An unlawful physical attack by one person upon another where neither the offender displays a weapon, nor the victim suffers obvious severe or aggravated bodily injury involving apparent broken bones, loss of teeth, possible internal injury, severe laceration or loss of consciousness.

Intimidation: To unlawfully place another person in reasonable fear of bodily harm through the use of threatening words and/or other conduct, but without displaying a weapon or subjecting the victim to actual physical attack.

Destruction/Damage/Vandalism of Property (Except "Arson"): To willfully or maliciously destroy, injure, disfigure or deface any public or private property, real or personal, without the consent of the owner or person having custody or control over it.

If a hate crime occurs during an incident involving larceny, simple assault, intimidation or vandalism, Clery Act requires that the statistic be reported as a hate crime even though these four crime classifications by themselves are not Clery-reportable crimes. A hate crime is not a separate, distinct crime, but is the commission of a criminal offense which was motivated by the offender's bias. If the facts of the case indicate that the offender was motivated to commit the offense because of his/her bias against the victim's race, religion, ethnicity, national origin, gender, gender identity, sexual orientation or disability, the crime is classified as a hate crime.

Sexual Harassment: Sexual harassment is unwelcomed conduct of a sexual nature. Oregon Tech is committed to providing a respectful environment for all its members. Sexual harassment of students and employees by other members of the university community is prohibited and will not be tolerated.

Sexual harassment is a violation of Federal Law (Titles VII and IX) and the Oregon University Administrative Rule 580-015-0015 along with Oregon Administrative Rule 578-12-0010(1)(2) prohibiting any form of discrimination. Sexual harassment is a prohibited act normally resulting in disciplinary proceedings against the perpetrator.

Unwanted sexual activity by persons abusing positions of economic, supervisory or academic power is undesirable and oppressive. Sexual harassment is also sex discrimination which is against the law and administrative rules.

If you believe you are being or have been sexually harassed, please contact the Title IX Officer at 541.885.0182. Office of Human Resources office handles complaints and grievances along with inquiries regarding discrimination or equity programs. The Human Resources number is 541.885.1120. The Office of Human Resources will deal with all harassment matters directly and confidentially. Complaints are handled in accordance with Oregon Tech Policy 21-25. Retaliation also is prohibited.

Information on Chemeketa Community College's sexual harassment resources can be found at <https://www.chemeketa.edu/complaints-and-concerns>

Campus Security Authorities

Oregon Tech encourages the campus community to immediately report crimes or suspicious activity to Campus Safety to help maintain a safe environment for students, employees and visitors.

Pursuant to the Clery Act, the university is required to compile and publish crime statistics in an Annual Security and Fire Safety Report. As part of this obligation, members of the university's community who are Campus Security Authorities are required to report crimes for inclusion as statistics in the university's annual report.

Who Are Campus Security Authorities

Campus Security Authorities is a term specific to the Clery Act that encompasses certain departments, groups and individual Oregon Tech employees who have a duty to report crimes they become aware of, as defined by the Clery Act. The law defines a Campus Security Authority as "an official of an institution who has significant responsibility for student and campus activities, including, but not limited to, student housing, student discipline and campus judicial proceedings.

Examples of Campus Security Authorities:

Police and security departments, to include Campus Safety
Deans and Directors
Title IX Coordinators
Office of the Dean of Students
Athletics team coaches
University Housing staff
Employees advisors to student organizations

Campus Security Authorities may also be identified by job function; that is any employee who, by virtue of their job function, has significant responsibility for assisting students or campus activities. Examples would be student advisors or formal or informal student mentors.

The Clery Act requires that Campus Security Authorities be Identified, Notified and Trained

Campus Security Authorities who have been identified by job title receive annual notification and training and are asked to forward the training to anyone within their department who they believe meets the Clery definition of a Campus Security Authority by job function. A listing of all Campus Safety Authorities is maintained by Campus Safety. If you believe that you may qualify as a Campus Security Authority and have not received notification or training, please contact the Executive Director of Resilience, Emergency Management and Safety at 541.885.1225.

The Role of a Campus Security Authority

Campus Security Authorities should not investigate crimes or attempt to determine whether in fact a crime occurred. A Campus Security Authority's obligation is to simply report the information that they have as soon as possible. To better assist a Campus Security Authority with determining what they are required to report, the following offenses that occur on campus or non-campus buildings or property owned or controlled by the university and public property within or immediately adjacent are required to be reported:

- Murder
- Manslaughter by Negligence
- Sexual Assault (Rape, Fondling, Incest & Statutory Rape)
- Robbery
- Aggravated Assault
- Burglary

- Vehicle Theft
- Arson
- Dating Violence
- Domestic Violence
- Stalking
- Hate/Bias Crimes

It should be noted that Chemeketa Community College includes in its Annual Security and Fire Safety Report the names of designated Campus Security Authorities on its campus. Information on Chemeketa Community College Campus Security Authorities, as well as the Annual Security Report, can be found at <https://www.chemeketa.edu/about/parking-public-safety>.

If You Are Sexually Assaulted

For Students:

If you are a victim of sexual assault, you can contact one of the following offices:

- Campus Safety dial 541.885.1111
- Student Affairs (to reach the Vice President for Student Affairs or the Dean of Students), dial 541.885.1011
- Integrated Student Health Center dial 541.885.1800
- Diversity/Title IX Office, dial 541.885.0182
- Klamath Falls Police Department, dial 541.883.5336
- Wilsonville Police Department, dial 503.682.1012

If you are a victim of sexual assault, consider the following:

- Talk to someone you trust about the incident, such as a good friend, a family member and/or a member of the university community. Talking to someone can help you clarify your options.
- Do not wash, shower, douche, change, destroy or clean the clothes you wore during the assault. These provide vital evidence should you later decide to prosecute.
- Contacting the police department does not mean you must press charges. Ask about filing an "informational" (informal) report, which covers the expenses for a rape exam and provides a record of the incident if you later decide to file charges.

Whether or not criminal charges are filed, a campus administrative investigation will be conducted and handled through the Office of Student Affairs if the incident is officially reported to the university. Integrated Student Health Center staff are confidential reporters and will not disclose a report to the university. Campus sanctions can be imposed regardless of the criminal investigation.

For information regarding Chemeketa Community College's response and resources to sexual assault can be found at both <https://www.chemeketa.edu/complaints-and-concerns/report/preventing-sexual-misconduct> and <https://www.chemeketa.edu/complaints-and-concerns/report>

For Employees:

Remember that you are not to blame; no one deserves to be sexually assaulted. You should contact one of the following offices:

- Campus Safety, the Title IX Coordinator or the Klamath Falls Police Department.
- For Campus Safety assistance, dial 541.885.1111 or 541.891.2143
- For the Diversity/Title IX Officer, dial 541.885.1073.
- For police assistance, dial 911.
- Talk to someone you trust about the incident, such as a good friend, a family member and/or a member of the university community. Talking to someone can help you clarify your options.
- Do not wash, shower, douche, change, destroy or clean the clothes you wore during the assault. These provide vital evidence should you later decide to prosecute.
- Contacting the police department does not mean you must press charges. Ask about filing an "informational" (informal) report, which covers the expenses for a rape exam and provides a record of the incident if you later decide to file charges.

Rape Evidence Collection Examination

A rape exam provides essential treatment for exposure to sexually transmitted diseases and pregnancy. It also collects evidence to be used against your assailant, should pressing charges be the victim's course of action. While Campus Safety will assist in reporting to the Klamath Falls Police Department and the Wilsonville Police Department, at Chemeketa Community College Public Safety will assist with reporting to the Marion County Sheriff's Office.

In most cases, DNA evidence needs to be collected within 72 hours be analyzed by a crime lab but a sexual assault forensic exam can reveal other forms of evidence beyond this time frame that can be useful if you decide to report. The examination will be conducted at a medical facility by a certified Sexual Assault Nurse Examiner (S.A.N.E.). Please look over the added website for more information on sexual assault exams/rape kits <https://www.rainn.org/get-information/sexual-assault-recovery/rape-kit>.

General Medical Attention

You can receive medical attention from the following areas:

Klamath Falls

- Integrated Student Health Center (on campus): 541.885.1800.
 - This resource is for students only.
- Sky Lakes Medical Center: 541.882.6311.

Portland Metro

- Providence Medical Plaza: 503.582.2100.
- Geneva Health Center and Urgent Care: 503.685.9165.

Chemeketa Community College

- Salem Hospital: 503.561.5200.
- Kaiser Permanente Urgent Care: 503.361.5400.

For Immediate Counseling

Klamath Falls

- Oregon Tech Integrated Student Health Center at 541.885.1800. If it is an emergency, call and share that you need to see someone and the staff will do their best to see you.
- Klamath Basin Behavioral Health (KBBH) at 541.883.1030.
- The RAINN (Rape, Abuse and Incest National Network) number is 1.800.656.HOPE (4673) or www.rainn.org.
- The US government website on sexual assault at <http://changingourcampus.org/about-us/not-alone/>.
- Dial 988 for the 988 Suicide and Crisis Lifeline. Check out their website at: <https://988lifeline.org/>

Portland Metro

- Portland Metro Campus Mental Health Counseling is provided by the Integrated Student Health Center. They are available at 503.821.1319.
- Clackamas Crisis and Support 24-hour hotline at 503.655.8585 (ask to speak to a crisis counselor).
- Multnomah County Crisis Line at 503.988.4888.
- Washington County Crisis Line at 503.291.9111.
- The RAINN (Rape, Abuse and Incest National Network) number is 1.800.656.HOPE (4673) or www.rainn.org.
- The US government website on sexual assault at <http://changingourcampus.org/about-us/not-alone/>.
- Dial 988 for the 988 Suicide and Crisis Lifeline. Check out their website at: <https://988lifeline.org/>.

Chemeketa Community College

- For counseling services provided by Chemeketa Community College, view their website at <https://www.chemeketa.edu/students/student-services/counseling-services>

Additional Reporting Information

- Oregon Tech takes sexual and relationship violence very seriously. Another reporting option for crimes of sexual and dating violence can be anonymously reported by completing an Anonymous Report Form for sexual or relationship violence. It is available online at <https://www.oit.edu/student-affairs/report-it>. Once the form is filled out, it can be placed in an envelope and mailed or delivered to either the Student Affairs Office, room 217 in the College Union, or the Integrated Student Health Center. If the survivor wishes for the crime to be recorded in university statistics, a section on the report form will need to be completed. All details are on the anonymous reporting form. ***Filling out this form does not constitute a police report or a student conduct report. Please read the entire Sexual Assault portion of this annual report for more information on reporting a sexual crime to authorities.***
- Contact Campus Safety at 541.885.1111. They will help you in any manner possible, including contacting a counselor and reporting an assault to either the Klamath Falls Police Department or the Wilsonville Police Department
- Contact the Klamath Falls Police Department at 541.883.5336 or the Wilsonville Police Department at 503.682.1012. Officers will respond and assist in getting the incident documented.

JEANNE CLERY DISCLOSURE OF CAMPUS SECURITY POLICY AND CAMPUS CRIME STATISTICS ACT, AS AMENDED BY THE VIOLENCE AGAINST WOMEN REAUTHORIZATION ACT OF 2013

Oregon Tech prohibits the offenses of domestic violence, dating violence, sexual assault and stalking (as defined by the Clery Act) and reaffirms its commitment to maintaining a campus environment that emphasizes the dignity and worth of all members of the university community. Oregon Tech issues this statement of policy to inform the campus community of our programs to address domestic violence, dating violence, sexual assault and stalking as well as the procedures for institutional disciplinary action in cases of alleged dating violence, domestic violence, sexual assault or stalking, which will be followed regardless of whether the incident occurs on or off campus when it is reported to a university official.

Federal Clery Act Definitions of Domestic Violence, Dating Violence, Sexual Assault and Stalking

The Clery Act defines the crimes of domestic violence, dating violence, sexual assault and stalking as follows:

Domestic Violence:

- A Felony or misdemeanor crime of violence committed:
 - By a current or former spouse or intimate partner of the victim;
 - By a person with whom the victim shares a child in common;
 - By a person who is cohabitating with, or has cohabitated with, the victim as a spouse or intimate partner;
 - By a person similarly situated to a spouse of the victim under the domestic or family violence laws of the jurisdiction in which the crime of violence occurred; or
 - By any other person against an adult or youth victim who is protected from that person's acts under the domestic or family violence laws of the jurisdiction in which the crime of violence occurred.
- For the purposes of complying with the requirements of this section and §668.41, any incident meeting this definition is considered a crime for the purposes of Clery Act reporting.

Dating Violence: Violence committed by a person who is or has been in a social relationship of a romantic or intimate nature with the victim.

- The existence of such a relationship shall be based on the reporting party's statement and with consideration of the length of the relationship, the type of relationship and the frequency of interaction between the persons involved in the relationship.
- For the purposes of this definition:
 - Dating Violence includes, but is not limited to, sexual or physical abuse or the threat of such abuse.
 - Dating violence does not include acts covered under the definition of domestic violence.

- For the purposes of complying with the requirements of this section and §668.41, any incident meeting this definition is considered a crime for the purposes of Clery Act reporting.

Sexual Assault An offense that meets the definition of rape, fondling, incest or statutory rape as used in the FBI's Uniform Crime Reporting (UCR) program. Per the National Incident-Based Reporting System User Manual from the FBI UCR Program, a sex offense is "any sexual act directed against another person, without the consent of the victim, including instances where the victim is incapable of giving consent."

- **Rape** is defined as the penetration, no matter how slight, of the vagina or anus with any body part or object or oral penetration by a sex organ of another person, without the consent of the victim.
- **Fondling** is defined as the touching of the private parts of another person for the purposes of sexual gratification, without the consent of the victim, including instances where the victim is incapable of giving consent because of his/her age or because of his/her temporary or permanent mental incapacity.
- **Incest** is defined as sexual intercourse between persons who are related to each other within the degrees wherein marriage is prohibited by law.
- **Statutory Rape** is defined as sexual intercourse with a person who is under the statutory age of consent.
- **Stalking:**
 - Engaging in a course of conduct directed at a specific person that would cause a reasonable person to:
 - Fear for the person's safety or the safety of others; or
 - Suffer substantial emotional distress.
 - For the purposes of this definition:
 - *Course of conduct* means two or more acts, including, but not limited to, acts which the stalker directly, indirectly, or through third parties, by any action, method, device, or means follows, monitors, observes, surveils, threatens, or communicates to or about, a person or interferes with a person's property.
 - *Reasonable person* means a reasonable person under similar circumstances and with similar identities to the victim.
 - *Substantial emotional distress* means significant mental suffering or anguish that may, but does not necessarily, require medical or other professional treatment or counseling.
- For the purposes of complying with the requirements of this section and section 668.41, any incident meeting this definition is considered a crime for the purposes of Clery Act reporting.

Jurisdictional Definitions of Domestic Violence, Dating Violence, Sexual Assault and Stalking

Domestic Violence: The state of Oregon defines domestic violence as follows: abuse between family or household members. Oregon defines family or household members as spouses, former spouses, adult persons related by blood or marriage, persons cohabiting with each other, persons who have cohabited with each other or who have been involved in a sexually intimate relationship and unmarried parents of a minor child.

Dating Violence: The state of Oregon defines dating violence as follows: a pattern of behavior in which a person uses or threatens to use physical, mental or emotional abuse, or sexual violence, to control another person who is in a dating relationship with the person, where on or both persons are 13 to 19 years of age.

Sexual Assault: The state of Oregon defines sexual assault as follows: sexual assault is any type of sexual encounter without a person's consent, including rape, attempted rape, child molestation, inappropriate touching, incest (sexual contact between family members, voyeurism (when someone watches private sexual acts), indecent exposure and sexual harassment.

Stalking: The state of Oregon defines stalking as follows: stalking occurs when a person knowingly alarms or coerces another person or member of that person's immediate family or household by engaging in repeated and unwanted contact with the other and it is objectively reasonable for a person in the victim's situation to have been alarmed or coerced by the contact and the repeated and unwanted contact causes the victim reasonable apprehension regarding the personal safety of the victim or a member of the victim's immediate family or household.

Consent: The state of Oregon defines consent, in relation to sexual activity, as follows: Oregon consent is defined as 18 years of age as being the minimum age for an individual to be considered legally old enough to consent to participate in sexual activity. Individuals aged 17 or younger are not legally able to consent to sexual activity.

Consent as Defined by Oregon Tech Policy: Oregon Tech policy OIT-01-004, Prohibited Sexual Misconduct, defines consent as the voluntary, knowing and unambiguous agreement to engage in a specific sexual activity during a sexual encounter. Consent cannot be given by someone who is: (1) sleeping; (2) unconscious, unaware or otherwise mentally or physically helpless because of drugs, alcohol or other contributing factors (i.e., mentally incapable); (3) unable to understand the nature of the sexual activity due to a mental disease or condition (i.e., mentally incapable); (4) under duress, threat, deception, coercion, abuse of a position of authority, or force; or (5) a minor unable to give Consent as defined by applicable state law (e.g., the age of Consent is 18 in Oregon and 16 in Washington).

How to Be an Active Bystander

Bystanders play a critical role in the prevention of sexual and relationship violence. They are “individuals who observe violence or witness the conditions that perpetuate violence. They are not directly involved but have the choice to intervene, speak up, or do something about it.” Oregon Tech wants to promote a culture of community accountability where bystanders are actively engaged in the prevention of violence without causing further harm. We as individuals may not always know what to do even if we want to help. If you or someone else is in immediate danger, dial 911. This could be when a person is yelling at or being physically abusive towards another and it is not safe for you to interrupt. Below is a list of some of the ways to be an active bystander:

- Watch out for friends and fellow students/employees. If someone looks like they could be in trouble or need help, ask if they are ok.
- Confront people who seclude, hit on, try to make out with or have sex with people who are incapacitated.
- Speak up when someone discusses plans to take sexual advantage of another person.
- Believe someone who discloses sexual assault, abusive behavior or experience with stalking.
- Refer people to on or off-campus resources listed in this document for support in health, counseling or with legal assistance.

Risk Reduction

With no intent to victim blame and recognizing that only abusers are responsible for their abuse, the following are some strategies to reduce one's risk of sexual assault or harassment (taken from Rape, Abuse, and Incest National Network, www.rainn.org)

- Be aware of your surroundings. Knowing where you are and who is around you may help you to find a way to get out of a bad situation.
- Try to avoid isolated areas. It is more difficult to get help if no one is around.
- Walk with purpose. Even if you don't know where you are going, act like you do.
- Trust your instincts. If a situation or location feels unsafe or uncomfortable, it probably isn't the best place to be.
- Try not to load yourself down with packages or bags as this can make you appear more vulnerable.
- Make sure your cell phone is with you and charged and that you have cash money.
- Don't allow yourself to be isolated with someone you don't trust or someone you don't know.
- Avoid putting music headphones in both ears so that you can be more aware of your surroundings, especially if you are walking alone.
- When you go to a social gathering, go with a group of friends. Arrive together, check in with each other throughout the evening and leave together. Knowing where you are and who is around you may help you to find a way out of a bad situation.
- Trust your instincts. If you feel unsafe in any situation, go with your gut. If you see something suspicious, contact law enforcement immediately (local authorities can be reached by calling 911).
- Don't leave your drink unattended while talking, dancing, using the restroom, or making a phone call. If you've left your drink alone, just get a new one.
- Don't accept drinks from people you don't know or trust. If you choose to accept a drink, go with the person to the bar to order it, watch it being poured and carry it yourself. At parties, don't drink from the punch bowls or other large, common open containers.
- Watch out for your friends and vice versa. If a friend seems out of it, is way too intoxicated for the amount of alcohol they've had, or is acting out of character, get him or her to a safe place immediately.
- If you suspect you or a friend has been drugged, contact law enforcement immediately (local authorities can be reached by calling 911 in most areas of the U.S.). Be explicit with doctors so they can give you the correct tests
- If you need to get out of an uncomfortable or scary situation here are some things that you can try:
 - Remember that being in this situation is not your fault. You did not do anything wrong; it is the person who is making you uncomfortable who is to blame.

- Be true to yourself. Don't feel obligated to do anything you don't want to do. "I don't want to" is always a good enough reason. Do what feels right to you and what you are comfortable with.
- Have a code word with your friends or family so that if you don't feel comfortable you can call them and communicate your discomfort without the person you are with knowing. Your friends or family can then come to get you or make up an excuse for you to leave.
- Lie. If you don't want to hurt the person's feelings it is better to lie and make up a reason to leave than to stay and be uncomfortable, scared or worse. Some excuses you could use are: needing to take care of a friend or family member, not feeling well, having somewhere else that you need to be, etc.
- Try to think of an escape route. How would you try to get out of the room? Where are the doors? Windows? Are there people around who might be able to help you? Is there an emergency phone nearby?
- If you and/or the other person have been drinking, you can say that you would rather wait until you both have your full judgment before doing anything you may regret later.

Programs to Prevent Domestic Violence, Dating Violence, Sexual Assault and Stalking

Oregon Tech engages in comprehensive, intentional, and integrated programming, initiatives, strategies and campaigns intended to end dating violence, domestic violence, sexual assault and stalking that:

- Are culturally relevant, inclusive of diverse communities and identities, sustainable, responsive to community needs, and informed by research, or assessed for value, effectiveness or outcome; and
- Consider environmental risk and protective factors as they occur on the individual, relationship, institutional, community and societal levels.

Educational programming consists of primary prevention and awareness programs for all incoming students and new employees and ongoing awareness and prevention campaigns for students and that:

- A statement that the institution prohibits the crimes of domestic violence, dating violence, sexual assault and stalking (as defined by the Clery Act);
- The definitions of domestic violence, dating violence, sexual assault and stalking according to any applicable jurisdictional definitions of these terms, in this case definitions as stated in the Oregon Revised Statutes;
- What behavior and actions constitute consent, in reference to sexual activity, in the State of Oregon;
- The institution's definition of consent AND the purposes for which that definition is used.
- A description of safe and positive options for bystander intervention. Bystander intervention means safe and positive options that may be carried out by an individual or individuals to prevent harm or intervene when there is a risk of dating violence, domestic violence, sexual assault or stalking. Bystander intervention includes recognizing situations of potential harm, understanding institutional structures and cultural conditions that facilitate violence, overcoming barriers to intervening, identifying safe and effective intervention options and taking action to intervene;
- Information on risk reduction. Risk reduction means options designed to decrease perpetration and bystander inaction, and to increase empowerment for victims in order to promote safety and to help individuals and communities address conditions that facilitate violence.
- Information regarding:
 - Procedures victims should follow if a crime of domestic violence, dating violence, sexual assault and stalking occurs (as described in "Procedures Victims Should Follow if a Crime of Domestic Violence, Dating Violence, Sexual Assault and Stalking Occurs" elsewhere in this document)
 - How the institution will protect the confidentiality of victims and other necessary parties (as described in "Assistance for Victims: Rights and Options" elsewhere in this document);
 - Existing counseling, health, mental health, victim advocacy, legal assistance, visa and immigration assistance, student financial aid, and other services available for victims, both within the institution and in the community (as described in "Assistance for Victims: Rights and Options" elsewhere in this document); and
 - Options for, available assistance in, and how to request changes to academic, living, transportation and working situations or protective measures (as described in "Assistance for Victims: Rights and Options" elsewhere in this document);
 - Procedures for institutional disciplinary action in cases of alleged dating violence, domestic violence, sexual assault, or stalking (as described in "Adjudication of Violations" elsewhere in this document)

Primary Prevention and Awareness Programs

Oregon Tech is committed to sustaining an environment free from sex-based discrimination and harassment. As part of our ongoing commitment to the community's well-being, we provide training and education about Oregon Tech's policies, applicable federal and state laws, including but not limit to, Title IX of the Education Amendments of 1972, as well as information about the rights, responsibilities and resources applicable to each member of our learning and working community. The training and education programs include presentations requested by individual campus departments or academic programs, information provided to new student during New Student Orientation, also known as SOAR, and mandatory Title IX training provided to all employees, to include new employees, both online and during in-person training session during convocation. All training, to include Title IX training, includes explanations of what constitutes Domestic Violence, Dating Violence, Sexual Assault and Stalking, as well as information about how to report such incidents, whether via online or in person.

Specifically, the university offered the following primary prevention and awareness programs for all incoming students in 2024:

Name of Program	Date Held	Location Held	Which Prohibited Behavior* Covered?
Allyship-Racial Justice	Winter Term, 2024	Klamath Falls and Portland Metro Campuses	Racial discrimination/bias Support for marginalized communities
Title IX, Consent and Allyship (for all Resident Advisors)	September, 2024	Klamath Falls	Consent, Title IX and Allyship, to include DoV, DaV, SA and S
Title IX for Students	Ongoing through the calendar year 2024	Online for both Klamath Falls and Portland Metro Campuses through Vector Solutions	Title IX topics to include DoV, DaV, SA and S
Unconscious Bias Training for Students	Ongoing through calendar year 2024	Online for both Klamath Falls and Portland Metro Campuses through Vector Solutions	Recognizing internal bias and its impact on underserved communities
Title IX – Stalking	Winter Term, 2024	Klamath Falls and Portland Metro Campuses	S

*DoV means Domestic Violence, DaV means Dating Violence, SA means Sexual Assault and S means Stalking

The university offered the following primary prevention and awareness programs for all new employees in 2024:

Name of Program	Date Held	Location Held	Which Prohibited Behavior* Covered?
Title IX and Title IX Reporting (new employee hires)	September 2024	Klamath Falls and Portland Metro Campuses	Title IX and Title IX Reporting, to include DoV, DaV, SA and S
Sexual Harassment Prevention in Higher Education (via Vector Learning Management System)	Ongoing through the calendar year 2024	Online for both Klamath Falls and Portland Metro Campuses through Vector Solutions	Sexual Harassment
Consent and Title IX for Athletics (new athletic coaches)	September 2024	Klamath Falls	Consent and Title IX, to include DoV, DaV, SA and S

*DoV means Domestic Violence, DaV means Dating Violence, SA means Sexual Assault and S means Stalking

Ongoing Prevention and Awareness Campaigns

The university has developed an annual educational campaign consisting of both online and in-person training provided to employees and students, as well as downloadable online training resources via the Title IX training website found at <https://www.oit.edu/title-ix/training>. These trainings and resources cover topics ranging from annual Title IX refresher training for employees and students; ongoing Civil Rights and Oregon SATF (Sexual Assault Task Force) Campus investigator training and "Supporting Students in Crisis" Training. Oregon Tech participates in activities such as Sexual Assault Awareness Month.

The university offered the following ongoing awareness and prevention programs for students in 2024:

Name of Program	Date Held	Location Held	Which Prohibited Behavior* Covered?
Title IX and Sexual Misconduct	April 2024	Klamath Falls and Portland Metro Campuses	SA, S, Title IX
Sexual Harassment Prevention (via Vector Learning Management System)	Ongoing through the calendar year 2024	Online for both Klamath Falls and Portland Metro Campuses through Vector Solutions	Sexual Harassment
Allyship – LGBTQIA+	March 2024	Klamath Falls and Portland Metro Campuses	Discrimination against those in the LGBTQIA+ community
Title IX and Bias Training for Students	Ongoing through the calendar year 2024	Online for both Klamath Falls and Portland Metro Campuses through Vector Solutions	DoV, DaV, SA, S and Bias

*DoV means Domestic Violence, DaV means Dating Violence, SA means Sexual Assault and S means Stalkin

The university offered the following ongoing awareness and prevention programs for employees in 2024:

Name of Program	Date Held	Location Held	Which Prohibited Behavior* Covered?
Title IX and Sexual Misconduct for Employees	September 2024	Klamath Falls	DoV, DaV, SA, S and Title IX
Sexual Harassment Prevention in Higher Education (via Vector Learning Management System)	Ongoing through the calendar year 2024	Online for both Klamath Falls and Portland Metro Campuses through Vector Solutions	Sexual Harassment
Title IX and Bias Training for Employees	Ongoing through the calendar year 2024	Online for both Klamath Falls and Portland Metro Campuses through Vector Solutions	Title IX and Title IX Reporting, to include DoV, DaV, SA and S

*DoV means Domestic Violence, DaV means Dating Violence, SA means Sexual Assault and S means Stalking

Procedures Victims Should Follow if a Crime of Domestic Violence, Dating Violence, Sexual Assault and Stalking Occurs

After an incident of sexual assault, dating violence or domestic violence, the victim should consider seeking medical attention as soon as possible. In Oregon, evidence may be collected even if you chose to remain anonymous. However, there is a provision in Oregon law prohibiting the testing of anonymous evidence kits, but both non-anonymous and anonymous kits must be retained for no less than 60 years under Chapter 89 of the Oregon Revised Statutes. It is important that a victim of sexual assault not bathe, douche, smoke, change clothing or clean the bed/linen/area where they were assaulted if the offense occurred within the past 96 hours so that evidence may be preserved that may assist in proving that the alleged criminal offense occurred/or is occurring or may be helpful in obtaining a protection order. In circumstances of sexual assault, if victims do not opt for forensic evidence collection, health care providers can still treat injuries and take steps to address concerns of pregnancy and/or sexually transmitted infections. Victims of sexual assault, domestic violence, stalking and dating violence are encouraged to also preserve evidence by saving text messages, instant messages, social networking pages and other communications as well as keeping pictures, logs or other copies of documents, if they have any, that would be useful to university adjudicators/investigators or law enforcement.

As time passes, evidence may dissipate or become lost or unavailable, thereby making investigation, possible prosecution, disciplinary proceedings or obtaining protection from abuse orders related to the incident more difficult. If a victim chooses not to make a complaint regarding an incident, he or she nevertheless should consider speaking with Campus Safety, the Klamath Falls Police Department, the Wilsonville Police Department or the Marion County Sheriff's Office (depending on your location) to preserve evidence if the victim decides to report the incident to law enforcement or the university at a later date to assist in proving that the alleged criminal offense occurred or that may be helpful in obtaining a protection order.

Involvement of Law Enforcement and Campus Authorities

Although the university strongly encourages all members of its community to report violations of this policy to law enforcement (to include Campus Safety, the Klamath Falls Police Department, the Wilsonville Police Department or the Marion County Sheriff's Office for Chemeketa Community College), it is the victim's choice whether or not to make such a report. Victims have the right to decline to notify law enforcement. However, Campus Safety will assist any victim with notifying law enforcement if the victim so desires. For the Klamath Falls campus, the Klamath Falls Police Department may be reached at 541.883.5336 or in person at 2501 Shasta Way. Additional information about the Klamath Falls Police Department may be found online at: <https://www.klamathfalls.city/236/Police>. For the Portland Metro campus, the Wilsonville Police Department may be reached at 503.682.1012 or in person at 29799 SW Town Center Loop E in Wilsonville. Additional information about the Wilsonville Police Department may be found online at: <https://www.wilsonvilleoregon.gov/police>. For students at the Chemeketa Community College campus, the Marion County Sheriff's Office may be reached at 503.588.5094 or in person at 100 High St NE in Salem. Additional information about the Marion County Sheriff's Office may be found online at: <https://www.co.marion.or.us/so>.

Reporting Incidents of Domestic Violence, Dating Violence, Sexual Assault and Stalking

If you have been the victim of domestic violence, dating violence, sexual assault or stalking, you should report the incident promptly to the Title IX Coordinator by calling 541.885.0182 or visiting office 225 in the LRC to report in person. Reports can also be made to Campus Safety, if the victim so desires.

Reports of all domestic violence, dating violence, sexual assault and stalking made to Campus Safety will automatically be referred to the Title IX Coordinator for investigation regardless of if the complainant chooses to pursue criminal charges.

Procedures the University Will Follow When a Crime of Domestic Violence, Dating Violence, Sexual Assault and Stalking is Reported

The university has procedures in place that serve to be sensitive to victims who report sexual assault, domestic violence, dating violence, and stalking, including informing individuals about their right to file criminal charges as well as the availability of counseling, health, mental health, victim advocacy, legal assistance, visa and immigration assistance, student financial aid and other services on and/or off campus as well as additional remedies to prevent contact between a complainant and an accused party, such as changes to housing, academic, protective orders, transportation and working situations, if reasonably available. The university will make such accommodations or protective measures, if the victim requests them and if they are reasonable available, regardless of whether the victim chooses to report the crime to the Campus Safety, the Klamath Falls Police Department, the Wilsonville Police Department or the Marion County Sheriff's Office. Students should contact the Title IX Coordinator at 541.885.0182 and employees should contact Human Resources at 541.885.1120.

If a report of domestic violence, dating violence, sexual assault or stalking is reported to the university, below are the procedures that the University will follow:

Incident Being Reported	Procedure Institution Will Follow
Sexual Assault	<ul style="list-style-type: none"> Depending on when reported (immediate vs delayed report), institution will provide complainant with access to medical care Oregon Tech will assess immediate safety needs of complainant Oregon Tech will assist complainant with contacting the Klamath Falls Police Department, Wilsonville Police Department or the Marion County Sheriff's Office if complainant requests AND provide the complainant with contact information for mentioned law enforcement agencies Oregon Tech will provide complainant with referrals to on and off-campus mental health providers Oregon Tech will assess the need to implement interim or long-term protective measures, if appropriate. Oregon Tech will provide the victim with a written explanation of the victim's rights and options Oregon Tech will provide a "No trespass" directive to accused party if deemed appropriate Oregon Tech will provide written instructions on how to apply for a Protective Order/Restraining Order

	<ul style="list-style-type: none"> • Oregon Tech will provide a copy of the policy applicable to Sexual Assault to the complainant and inform the complainant regarding timeframes for inquiry, investigation and resolution • Oregon Tech will inform the complainant of the outcome of the investigation, whether or not the accused will be administratively charged and what the outcome of the hearing is • Oregon Tech will enforce the anti-retaliation policy and take immediate and separate action against parties that retaliate against a person for complaining of sex-based discrimination or for assisting in the investigation • Oregon Tech official receiving the report will forward the report to the Title IX Coordinator in accordance with the institution's policy and procedure
Stalking	<ul style="list-style-type: none"> • Oregon Tech will assess immediate safety needs of complainant • Oregon Tech will assist complainant with contacting the Klamath Falls Police Department, the Wilsonville Police Department or the Marion County Sheriff's Office if complainant requests AND provide the complainant with contact information for the mentioned law enforcement agencies • Oregon Tech will provide written instructions on how to apply for Protective Order/Restraining Order • Oregon Tech will provide written information to complainant on how to preserve evidence • Oregon Tech will assess the need to implement interim or long-term protective measures to protect the complainant, if appropriate • Oregon Tech will provide the victim with a written explanation of the victim's rights and options • Oregon Tech will provide a "No trespass" directive to accused party if deemed appropriate • Oregon Tech official receiving the report will forward the report to the Title IX Coordinator in accordance with the institution's policy and procedure
Dating Violence	<ul style="list-style-type: none"> • Oregon Tech will assess immediate safety needs of complainant • Oregon Tech will assist complainant with contacting the Klamath Falls Police Department, the Wilsonville Police Department or the Marion County Sheriff's Office if complainant requests AND provide the complainant with contact information for the mentioned law enforcement agencies • Oregon Tech will provide written instructions on how to apply for Protective Order • Oregon Tech will provide written information to complainant on how to preserve evidence • Oregon Tech will assess the need to implement interim or long-term protective measures to protect the complainant, if appropriate • Oregon Tech will provide the victim with a written explanation of the victim's rights and options • Oregon Tech will provide a "No trespass" directive to accused party if deemed appropriate • Oregon Tech official receiving the report will forward the report to the Title IX Coordinator in accordance with the institution's policy and procedure
Domestic Violence	<ul style="list-style-type: none"> • Oregon Tech will assess immediate safety needs of complainant • Oregon Tech will assist complainant with contacting the Klamath Falls Police Department, the Wilsonville Police Department or the Marion County Sheriff's Office if complainant requests AND provide the complainant with contact information for the mentioned law enforcement agencies • Oregon Tech will provide written instructions on how to apply for Protective Order/Restraining Order • Oregon Tech will provide written information to complainant on how to preserve evidence • Oregon Tech will assess the need to implement interim or long-term protective measures to protect the complainant, if appropriate • Oregon Tech will provide the victim with a written explanation of the victim's rights and options

- Oregon Tech will provide a “No trespass” directive to accused party if deemed appropriate
- Oregon Tech official receiving the report will forward the report to the Title IX Coordinator in accordance with the institution’s policy and procedure

Assistance for Victims: Rights and Options

Regardless of whether a victim elects to pursue a criminal complaint or whether the offense is alleged to have occurred on or off campus, the university will assist victims of sexual assault, domestic violence, dating violence, and stalking and will provide each victim with a written explanation of their rights and options. Such written information will include:

- The procedures victims should follow if a crime of dating violence, domestic violence, sexual assault or stalking has occurred;
- Information about how the institution will protect the confidentiality of victims and other necessary parties;
- A statement that the institution will provide written notification to students and employees about victim services within the institution and in the community;
- A statement regarding the institution’s provisions about options for, available assistance in and how to request accommodations and protective measures; and
- An explanation of the procedures for institutional disciplinary action.

Rights of Victims and the Institution's Responsibilities for Orders of Protection, “No Contact” Orders, Restraining Orders or Similar Lawful Orders Issued by a Criminal, Civil or Tribal Court or by the Institution

Oregon Tech complies with Oregon law in recognizing orders of protection. When an order of protection, which can include both stalking protective orders or restraining orders, is issued, the student, staff or faculty petitioner should provide a copy of the order to Campus Safety. Campus Safety will in turn share that order with both the Office of Student Affairs, the University General Counsel and the Title IX Coordinator. A copy of the order will remain with Campus Safety and steps will be taken by the Office of Student Affairs and the Title IX Coordinator to ensure that the conditions stipulated in the order are followed. Steps may include, but is not limited to: walking with the individual to ensure they reach their destination safely, special parking arrangements, changing classroom location or allowing a student to complete assignments from home, etc. The university cannot apply for a legal order of protection, no contact order or restraining order for a victim from the applicable jurisdiction(s).

The victim is required to apply directly for these services. Protection orders are filed through the Circuit Court either in the county where you reside, the county where the other person resides or in the county where the abuse happened. You can apply for a protective order online, you can seek assistance from a lawyer, or you can contact a local victim advocacy group.

Oregon has five different restraining/protective order types. Each one protects against different kinds of abuse. Below is a listing of the types of orders an individual could be eligible for. Note that the term “respondent” refers to the person you are filing the order against:

Type of Order:	Age:	Relationship:	Abuse/Ongoing Danger:
Family Abuse Restraining Order (FAPA)	1. You and the respondent must both be at least 18 years old or; 2. If you are younger than 18, the respondent must be at least 18 years old and be either your current or former spouse or Registered Domestic Partner or someone who has (or had) a sexually intimate relationship with you	The respondent must be one of the following: 1. Your current or former spouse or Registered Domestic Partner 2. Someone you live with in a sexually intimate relationship (or used to) 3. Someone you have a sexually intimate relationship with (or did within the past 2 years) 4. Related to you by blood, marriage or adoption 5. The parent of your child	In the past 180 days, the respondent must have done at least one of the following: 1. Physically injured you 2. Tried to physically injure you 3. Made you afraid that he or she was about to physically injure you 4. Made you have sexual relations against your wishes by using force or threats of force Additionally, you must be in ongoing danger of abuse very soon, meaning imminent danger. The respondent must be a threat to the physical safety of you or your children

Elderly Person and Persons with Disabilities Abuse Prevention Act (EPPDAPA)	<p>You must be either one of the following:</p> <ol style="list-style-type: none"> 1. 65 years or older 2. You have a physical or mental condition that affects a major life activity 3. You have had a brain injury resulting in loss of mental or physical function that affects your ability with daily living 	<p>There is no relationship requirement, however you cannot file against your court-appointed guardian or conservator.</p>	<p>Abuse can mean any of the following:</p> <ol style="list-style-type: none"> 1. Physical injury or pain that was not accidental 2. Neglect that leads to physical harm or abandoning duties of care 3. Use of insulting or inappropriate names, profanity, ridicule, harassment, threats, intimidation, or inappropriate sexual comments 4. Coercion 5. Conduct that threatens significant physical or emotional harm 6. Taking money or property wrongfully 7. Sexual contact without consent <p>Additionally, you must be in immediate and present danger</p>
Sexual Abuse Protective Order (SAPO)	<p>You are 18 years of age or older</p>	<p>You and the respondent cannot be “family or household members”, meaning they are not your spouse, former spouse, current or former Registered Domestic Partner, an adult with whom you are living or did live in a sexual relationship, an adult you’ve been in a sexual relationship in the last 2 years, an adult related by blood, marriage or adoption or the parent of your child</p>	<p>The respondent must have made you have sexual contact without your consent or made you have sexual contact when you were not capable of consent. You must also show you are in reasonable fear for your physical safety</p>
Stalking Order	<p>No specified age requirement</p>	<p>No specified relationship requirement</p>	<p>Respondent must have made repeated and unwanted contact with you or a member of your immediate family or household. That contact must cause alarm, fear or the feeling of being forced to do or not do something against your will. The following also applies:</p> <ol style="list-style-type: none"> 1. Contacts can be made either directly or through someone else 2. Repeated conduct means at least 2 incidents within the past 2 years 3. Contact can include waiting outside of your home, job or school, following you, letters, phone calls, texts, emails or committing a crime against you 4. Contact can be with you or a member of your immediate family or household. <p>Additionally, the contacts must have caused you to reasonably fear for your or a family member’s safety</p>

Extreme Risk Protection Order (ERPO)

No specified age requirement

Any family member (specifically a spouse, parent, child or sibling), household member, or intimate partner can apply. Law enforcement officers can also apply

Prevents a person who is at risk of hurting another person or of committing suicide from having or getting deadly weapons, including firearms

The university may issue an institutional no contact order if deemed appropriate or at the request of the victim or accused. If the university receives a report that such an institutional no contact order has been violated, the university will initiate disciplinary proceedings appropriate to the status of the accused (student, employee, etc.) and will impose sanctions if the accused is found responsible for violating the no contact order.

Accommodation and Protective Measures Available for Victims

Upon receipt of a report of domestic violence, dating violence, sexual assault or stalking, Oregon Tech will provide written notification to students and employees about accommodations available to them, including academic, living, transportation, protective orders and working situations. The written notification will include information regarding the accommodation options, available assistance in requesting accommodation and how to request accommodation and protective measures (i.e., the notification will include the name and contact information for the individual or office that should be contacted to request the accommodation).

At the victim's request, and to the extent of the victim's cooperation and consent, university offices will work cooperatively to assist the victim in obtaining accommodations. If reasonably available, a victim may be offered changes to academic, living, working, protective measures or transportation situations regardless of whether the victim chooses to report the crime to Campus Safety and the Klamath Falls Police Department (Klamath Falls campus), the Wilsonville Police Department (Portland Metro campus) or the Marion County Sheriff's Office (Chemeketa Community College). Examples of options for a potential change to the academic situation may be to transfer to a different section of a class, withdraw and take a class at another time if there is no option for moving to a different section, etc.

Potential changes to living situations may include moving to a different room or Housing facility. Possible changes to work situations may include changing working hours. Possible changes in transportation may include having the student or employee park in a different location, assisting the student or employee with a safety escort, etc.

To request changes to academic, living, transportation and/or working situations or protective measures, or to get assistance with accessing these services, a victim should contact the following:

- If they are a student, contact the Title IX Coordinator at 541.885.0182.
- If they are a university employee, contact Human Resources at 541.885.1120.

On and Off-Campus Services for Victims

Upon receipt of a report of domestic violence, dating violence, sexual assault or stalking, Oregon Tech will provide written notification to students and employees about existing assistance with and/or information about obtaining resources and services including counseling, health, mental health, victim advocacy, legal assistance, visa and immigration assistance, student financial aid and assistance in notifying appropriate local law enforcement. These resources include the following:

Klamath Falls

ON-CAMPUS	Type of Services Available	Service Provider	Contact Information
Counseling/Mental Health	Psychiatric, counseling and wellness programs	Students: Integrated Student Health Center. Employees: Employee Assistance Program, or EAP	Integrated Student Health Center: 541.885.1800 EAP through Canopy Counseling: 1.800.433.2320
Health	General medical care for illnesses, accidents, medication management, and medical referrals	Students: Integrated Student Health Center Employees: No provider on campus	Integrated Student Health Center: 541.885.1800

Victim Advocacy	Filing reports, connecting to both on campus and off-campus resources	Oregon Tech Title IX Office	541.885.0182
Legal Assistance	No provider on-campus	No provider on campus	No provider on campus
Visa and Immigration Assistance	Guidance with immigration, employment and cultural adjustment	Oregon Tech International Student Services	541.885.1392
Student Financial Aid	Student loan application/advisement, emergency loans, financial literacy services	Oregon Tech Financial Aid Office	541.885.1280

OFF-CAMPUS	Type of Services Available	Service Provider	Contact Information
Counseling and Mental Health	Counseling and mental health services	Klamath Basin Behavioral Health	541.883.1030
Health	Primary and emergency care services, nutrition and dietary support and resources, assistance with connecting to medical and mental health resources	Sky Lakes Medical Center	541.882.6311
Victim Advocacy	Shelter, hospital support, advocacy, support groups and assistance with protection orders and court support	Klamath Advocacy Center	24/7 hotline: 541.884.0390
Legal Assistance	Access to lawyers and legal advice	Legal Aid Services of Oregon	541.273.0533
Visa and Immigration Assistance	Visa and immigration assistance and legal advice	Legal Aid Services of Oregon	541.273.0533

Portland Metro

ON-CAMPUS	Type of Services Available	Service Provider	Contact Information
Counseling/Mental Health	Psychiatric, counseling and wellness programs	Students: Student Health Employees: Employee Assistance Program, or EAP	Portland Metro Mental Health Counseling: 503.821.1319 EAP through Canopy Counseling: 1.800.433.2320
Health	General medical care for illnesses, accidents, medication management, and medical referrals	No provider on campus	No provider on campus
Victim Advocacy	Filing reports, connecting to both on campus and off-campus resources	Oregon Tech Title IX Office	541.885.0182
Legal Assistance	No provider on campus	No provider on campus	No provider on campus
Visa and Immigration Assistance	Guidance with immigration, employment and cultural adjustment	Oregon Tech International Student Services	541.885.1392
Student Financial Aid	Student loan application/advisement, emergency loans, financial literacy services	Oregon Tech Financial Aid Office	503.821.1268

OFF-CAMPUS	Type of Services Available	Service Provider	Contact Information
Counseling and Mental Health	Counseling and mental health services	Clackamas Crisis and Support 24-hour hotline	503.655.8585
Health	Primary and emergency care services, nutrition and dietary support and resources, assistance with connecting to medical and mental health resources	Providence Medical Plaza	503.582.2100
Victim Advocacy	Shelter, hospital support, advocacy, support groups and assistance with protection orders and court support	Bradley Angle House All Under One Roof (Clackamas Women's Services)	503.281.2442 503.654.2288
Legal Assistance	Access to lawyers and legal advice	Legal Aid Services of Oregon	503.581.5265
Visa and Immigration Assistance	Visa and immigration assistance and legal advice	Legal Aid Services of Oregon	503.581.5265

Chemeketa Community College

On-campus and off-campus services for victims at Chemeketa Community College can be found at <https://www.chemeketa.edu/about/parking-public-safety/victim-assistance>

Other resources available to persons who report being the victim of sexual assault, domestic violence, dating violence or stalking include:

<http://www.rainn.org> – Rape, Abuse and Incest National Network

<http://www.ovw.usdoj.gov/sexassault.htm> - Department of Justice

<http://www2.ed.gov/about/offices/list/ocr/index.html> Department of Education, Office for Civil Rights

Confidentiality

Victims may request that directory information on file with the university be withheld by request to the Registrar's Office at 541.885.1300.

Regardless of whether a victim has opted-out of allowing the university to share “directory information,” personally identifiable information about the victim and other necessary parties will be treated as confidential and only shared with persons who have a specific need-to-know, i.e., those who are investigating/adjudicating the report or those involved in providing support services to the victim, including accommodations and protective measures. By only sharing personally identifiable information with individuals on a need-to-know basis, the institution will maintain as confidential, any accommodations or protective measures provided to the victim to the extent that maintaining such confidentiality would not impair the ability of the institution to provide the accommodations or protective measures.

The university does not publish the name of crime victims or other identifiable information regarding victims in the Daily Crime Log or in the annual crime statistics that are disclosed in compliance with the Jeanne Clery Disclosure of Campus Security Policy and Campus Crime Statistics Act. Furthermore, if a Timely Warning Notice is issued on the basis of a report of domestic violence, dating violence, sexual assault or stalking, the name of the victim and other personally identifiable information about the victim will be withheld

Adjudication of Violations

Oregon Tech's disciplinary process includes a prompt, fair and impartial investigation and resolution process. In all instances, the process will be conducted in a manner that is consistent with Oregon Tech's policy and that is transparent to the accuser and the accused. Usually, the resolution of domestic violence, dating violence, sexual assault and stalking complaints are completed within the timeframe specified in each policy the university maintains. Each procedure allows for extensions of timeframes for good cause with written notice to the accuser and the accused of the delay and the reason for the delay.

Oregon Tech officials involved in the investigation or adjudication of domestic violence, dating violence, sexual assault and stalking complaints are trained annually on the issues related to domestic violence, dating violence, sexual assault and stalking and how to conduct an investigation and hearing process that protects the safety of the victim and promotes accountability. Each policy provides that:

- The accuser and the accused will have timely notice for meetings at which the accuser or accused, or both, may be present;
- The accuser, the accused and appropriate officials will have timely and equal access to any information that will be used during formal and informal disciplinary meeting and hearings;
- The university disciplinary procedures will not be conducted by officials who have a conflict of interest or bias for or against the accuser or the accused;
- The accuser and the accused will have the same opportunities to have others present during any university disciplinary proceeding. The accuser and the accused each can be advised by an advisor of their choice at any stage of the process and to be accompanied by that advisor to any related meeting or proceeding. Oregon Tech will not limit the choice of advisor or presence for either the accuser or the accused in any meeting or university disciplinary proceeding. The role of the advisor is to provide support and they are not permitted to ask or answer questions for you, nor are they to interfere in the process for any reason at any time. If the advisor does not adhere to these or other applicable ground rules, the advisor will be dismissed from the applicable interview, proceeding or meeting;
- The accuser and the accused will be notified simultaneously, in writing, of any initial, interim and final decision of any disciplinary proceeding; and
- Where an appeal is permitted under the applicable policy, the accuser and the accused will be notified simultaneously in writing, of the procedures for the accused and the victim to appeal the result of the university disciplinary proceeding. When an appeal is filed, the accuser and the accused will be notified simultaneously in writing of any change to the result prior to the time that it becomes final as well as of the final result once the appeal is resolved.

Whether or not criminal charges are filed, the university or a person may file a complaint under the following policies, depending upon the status of the accused (student or employee):

Types of Disciplinary Proceedings Utilized in Cases of Alleged Domestic Violence, Dating Violence, Sexual Assault and Stalking

2020 Title IX Regulations: Title IX Policy and Procedure to Comply with the 2020 Title IX Regulations

NOTE: Because of the ruling in *Tennessee v. Cardona* on January 9, 2025, the 2024 Title IX amended rule has been vacated. While the U.S. Department of Education has an appeal period, it is unlikely that they will prevail. Consequently, institutions will be reverting to the 2020 rules until and unless another amendment is filed and passes.

Under Oregon Tech interim policy OIT-01-004, Prohibited Sexual Misconduct, the term Sexual Misconduct serves as an umbrella term for behaviors, including but not limited to: Sexual and Gender-Based Harassment, Sexual Exploitation, Sexual Assault, Relationship Violence and Sex and Gender Based Stalking. Each of the above terms under the umbrella of Sexual Misconduct is defined by the policy as follows:

- **Sexual Harassment:** A form of Sexual Misconduct. Oregon Tech recognizes three definitions of Sexual Harassment, consistently with federal law, pursuant to Title IX and Title VII and Oregon state law. All three definitions constitute Sexual Misconduct and are strictly prohibited. In addressing Sexual Harassment, Oregon Tech will apply the definition and corresponding procedures that are consistent with either Oregon or federal law, depending on the nature of the offense.
- **Gender Based Harassment:** A form of Sexual Harassment based on actual or perceived gender, gender identity, gender expression or sexual orientation, which may include acts of aggression, intimidation or hostility, whether verbal, non-verbal, graphic, physical, or otherwise, even if the acts do not involve conduct of a sexual nature.

- **Sexual Exploitation:** A form of Sexual Misconduct that occurs when a person takes sexual advantage of another person for the benefit of anyone other than that person without that person's Consent. Examples of behavior that could rise to the level of sexual exploitation include, but are not limited to: prostituting another person; recording images (e.g., video, photograph), audio, or otherwise of another person's sexual activity, intimate body parts, or the person in a state of undress; distributing images (e.g., video, photograph) or audio of another person's sexual activity, intimate body parts, or the person in a state of undress; and viewing another person's sexual activity, intimate body parts or the person in a state of undress in a place where that person would have a reasonable expectation of privacy.
- **Sexual Assault:** Any attempted or actual sexual act, including: vaginal or anal intercourse; anal, oral or vaginal penetration with an object; oral-genital contact; or other sexual contact, directed against another person without their consent, including instances where the person is incapable of giving consent. Several different acts can fall within the definition of Sexual Assault, including, but not limited to, Fondling, Incest, Rape, Sexual Assault, Sexual Assault with an Object, Sexual Contact, Sodomy and Statutory Rape.
- **Relationship Violence:** A broad term encompassing dating violence and domestic violence. It is also sometimes referred to as intimate partner violence. Relationship Violence may also manifest in stalking, although stalking can occur outside of an intimate relationship. Relationship Violence can include any act of violence or non-physical tactics including a pattern of emotionally or financially abusive behavior that one person uses against a current or former partner in a sexual, dating, spousal, domestic, or other intimate relationship, to gain or maintain power and control over another. Relationship Violence can be a single act or a pattern of behavior within a relationship. Relationship Violence may manifest in many different forms, including Dating Violence, Domestic Violence and Sex or Gender-Based Stalking.
- **Sex and Gender-Based Stalking:** Engaging in a course of conduct directed at a specific person, based on a person's sex or gender, that would cause a reasonable person to: (1) fear for the person's safety or the safety of others; or (2) suffer substantial emotional distress. For the purposes of this definition: (1) course of conduct means two or more acts, including, but not limited to, acts in which the stalker directly, indirectly, or through third parties, by any action, method, device, or means, follows, monitors, observes, surveils, threatens, or communicates to or about a person, or interferes with a person's property; (2) reasonable person means a reasonable person under similar circumstances and with similar identities to the person being stalked; (3) and substantial emotional distress means significant mental suffering or anguish that may but does not necessarily require medical or other professional treatment or counseling.

How to File a Misconduct Complaint

Filing a misconduct complaint can generally be done in one of two ways. For misconduct perpetrated by a student, a complaint can be filed with the Office of Student Affairs, while misconduct perpetrated by an employee or non-student member of the Oregon Tech community may be reported to the Office of Human Resources. Complaints can also be filed either with Campus Safety at 541.891.2143 or online through TechWeb under "Campus Resources". Under the Campus Resources tab, click on "Report an Incident". You can also follow the following link: <https://www.oit.edu/student-affairs/report-it>.

How the University Determines Whether This Policy will be Used

This policy and the related procedures apply to all forms of Sexual Misconduct, as defined above. Some forms of related sex discrimination may fall under the Prohibited Discrimination and Discriminatory Harassment Policy in addition to or instead of this Policy. The Title IX Coordinator and the Chief Human Resource Officers will be responsible for determining which policy applies and some decisions may be made depending on the classification of the Respondent (i.e., student, employee, or other) and the nature of the alleged conduct.

Steps in the Investigative Process

The Title IX Coordinator will review complaints received and set up an intake interview with the complainant. If the complainant is anonymous and depending on the amount of information given, every effort will be made to move forward. Otherwise, the complaint will be kept on file.

When the Title IX Coordinator meets with the complainant, they will provide the complainant with information on the following: rights and resources, options for moving forward, the investigative process and the option to request an investigation and options for supportive measures and/or academic adjustments.

If no investigation is requested, the complainant has the option of keeping the case open as long as they are still affiliated with Oregon Tech. They will be provided with available supportive measures and academic adjustment options as well as the option for a trained Title IX advisor of their choice.

If an investigation is requested, the complainant has the right to move forward with either a formal or informal resolution depending on the nature of the complaint. The resolutions are defined as follows:

- **Formal Resolution:** The Title IX Coordinator or their designee invites the respondent to participate in an intake interview. The respondent will be provided with their rights, resources and options during the investigative process, supportive measures and/or academic adjustments, a trained Title IX advisor of their choice and they will be told the difference between a law enforcement investigation and an administrative investigation. During the investigation, evidence will be collected, an investigation report created and the report and any statements and evidence will be attached as exhibits. The Title IX Coordinator completes the report and submits it to the Dean of Students for the final determination and possible sanctions. Once those sanctions are determined, the Dean of Students will meet individually with the complainant and respondent regarding the determination of responsibility and any possible sanctions.
- **Informal Resolution:** If the parties involved come to a resolution agreement, the matter is resolved informally and the case is closed. If the parties involved do not come to an agreement, the option to move to a formal resolution is provided. The complainant can withdraw from or close the complaint with the option to reopen as long as the respondent has affiliation with Oregon Tech. Additionally, supportive measures and academic adjustments can be made and the option of a no contact directive can be provided.

Steps in the Disciplinary Process Upon Submission to the Dean of Students

The following information is provided to outline the procedures in place at Oregon Tech for resolving alleged violations of university regulations. The procedures are designed to allow for fact-finding and decision-making in the context of the Oregon Tech educational community. The objective is to provide procedures that balance the rights of the individual with the legitimate interests of the university and community.

Any member of the university community (employee or student) or any person who is unaffiliated with the university who has knowledge of an alleged violation of the Code of Conduct may file a complaint against a student alleging that a violation of the Code of Conduct has occurred. The university itself may initiate a complaint.

Such complaints shall be filed with the Office of Student Affairs as soon as possible but typically within 180 calendar days (not university business days) of the alleged violation. A later complaint may be accepted with the approval of the Vice President for Student Affairs, the Dean of Students, or designee.

The complaint must be submitted in writing and signed by the complainant(s) or submitted via approved online form and electronically signed by appropriate technical method, and must include the date, time, place, name(s) of person(s) involved (e.g., the accused, witnesses) and sufficient detail to make a determination of whether disciplinary action may be warranted.

Complaints may be initiated for incidents where concurrent criminal charges are pending. The university reserves the right to adjudicate incidents without regard to either pending civil litigation or criminal prosecution. University disciplinary proceedings may proceed before, during or after court proceedings.

Decision-Making Process

Upon determining that sufficient evidence exists to believe that a violation of the Code of Conduct may have occurred, the Vice President for Student Affairs, the Dean of Students or other hearing officer with jurisdiction will notify the student in writing of the alleged violations against them. The written notice will be delivered by one of the following methods: (1) hand delivery to the student, (2) sent electronically to the student's institutional email address or (3) sent by U.S. mail to the student's last known address as filed in the Registrar's Office. Students are responsible for providing and maintaining a current local address with the Registrar's Office.

At the Administrative Hearing, the student will be provided with the following:

- An explanation of the alleged violations of university policy;
- A summary of the facts and information that substantiate the allegations; and the opportunity to reflect upon and respond with his/her account of the incident or circumstances pertaining to the allegation(s).
- An explanation of the decision of the hearing officer that may result in the following:
 - The allegation(s) may be dismissed as unfounded;
 - The student may admit responsibility for the violation(s) and have a sanction imposed; or
 - The student may be found responsible for violating the Code of Conduct and have a sanction imposed.

- Any sanction, except disciplinary suspension, deferred suspension and disciplinary expulsion may be imposed.
- Failure to respond to a written allegation of charges or failure to complete the assigned sanction(s) will result in either a hold being placed on the student's enrollment privileges or graduation, the filing of additional charges, or a decision being made based on the information available at the time.

Student Hearing Commission Hearing procedures are provided for allegations against an individual or group where suspension or expulsion from the university are possible if they are found responsible and for grievances. An Administrative Hearing will be conducted in these cases when the individual or group admits responsibility for the Code of Conduct violation(s). A hearing before the Student Hearing Commission is available for cases where suspension or expulsion is possible and the individual or group denies responsibility for a Code of Conduct violation, or there are disagreements pertaining to the facts of the case.

A hearing before the Student Hearing Commission may not be available during dead week, final examinations, breaks, Summer Term or other periods when a timely hearing is not possible.

- The Student Hearing Commission is comprised of a minimum of eight faculty appointed by the president; and three students appointed by student government and the dean of students (ex-officio member).
- A quorum of at least five members (one of which must be a student) is needed in order to hold the hearing.
- The Dean of Students, or designee, will be present as a non-voting participant. Their role will be to facilitate dialogue between the hearing panel and the students involved, direct the attention of the parties to relevant points, act as an adviser to the hearing panel and answer procedural questions as needed.
- If an attorney accompanies the charged student or the complainant at the hearing, the university may also elect to have an attorney present. The university's attorney shall serve as a non-voting observer and adviser to the hearing panel. Any adviser, including an attorney, is limited to advising the student, as noted elsewhere in this document.
- In cases of sexual harassment and sexual misconduct, the Title IX investigator will present an investigation report as part of the hearing proceedings. The investigator will present the report and answer questions. The role of the investigator is to serve as an unbiased party conducting a thorough investigation of all allegations of sexual harassment or sexual misconduct. The investigation report is a compilation of facts, not a verbatim report and is not appealable or rebuttable.

Pre-Hearing Procedures

Student Hearing Commission members will be asked for their availability to participate in an upcoming hearing. The Office of Student Affairs will prepare and send a written notice to the charged student or group and the complainant at least five university working days before the hearing. If expulsion is a possibility, ten university working days' notice is required. The written notice will be delivered by one of the following methods: (1) hand delivery to the student, (2) sent electronically to the student's institutional email address or (3) sent by U.S. mail to the student's last known address as filed in the Registrar's Office. Students are responsible for providing and maintaining a current local address with the Registrar's Office. The notice will include:

- The date, time, place and nature of the hearing;
- Reference to the sections of the Code of Conduct involved;
- A brief explanation of the alleged violation including the approximate date, time and place where the alleged violation occurred;
- Names of witnesses, if known;
- Acts alleged to constitute a violation;
- Whether the student may face expulsion for the violation;
- An explanation of the right to be accompanied by an adviser, including that the adviser's role is to advise and support the student. The adviser may not present the case, question relevant parties, or make statements during the proceedings. The student must notify the Office of Student Affairs two university working days in advance of the hearing if he or she will be accompanied by an attorney. In such cases, the university may elect to have an attorney in attendance.

The Dean of Students, or designee, will be available to meet with the complainant and the respondent, separately or together, to discuss and explain the hearing procedures and answer questions.

Three University Working Days in Advance of the Hearing

No less than three university working days in advance of the hearing, the charged student and the complainant will each provide to the Office of Student Affairs copies of documentary evidence to be presented at the hearing and the names of witnesses who will be called. It is the responsibility of each student to notify witnesses of the date, time and location of the hearing and to enlist their witnesses' cooperation and willingness to attend the hearing.

No less than three university working days in advance of the hearing, the charged student and the complainant will have the right to have access to documentary evidence to be presented at the hearing, by prior appointment.

Hearing Process

The purpose of the hearing is to attempt to provide a forum where all the evidence and testimony can be presented, where questions can be asked of all parties, and where the hearing panel can deliberate and decide by a preponderance of the evidence (meaning that it is “more likely true than not”) that a violation of the Code of Conduct did or did not occur. Except however, to impose the sanction of expulsion, the standard of proof at the hearing for imposition of that sanction shall be “clear and convincing” evidence (“substantially more likely true than not”). Formal rules of process, procedure and technical rules of evidence, such as those applied in criminal or civil court, are not used in student conduct proceedings. Deviations from prescribed procedures will not necessarily invalidate a decision or proceeding unless significant prejudice to the student or the university may result. The hearing will be recorded.

If the hearing panel concludes that a violation did occur, the panel decides what disciplinary action is appropriate. To protect the privacy of all parties and in accordance with FERPA (Family Educational Rights and Privacy Act), hearings will be closed. Both sides have the right to present witnesses, who will be subject to questioning by the hearing panel. Questioning by the complainant or the accused is permitted at the discretion of the hearing panel so long as it is not threatening or harassing. In the case of sexual misconduct, the hearing panel may, in its discretion, exclude evidence of the victim’s past sexual history from discussion during the hearing. The past sexual history of the victim with persons other than the alleged perpetrator is irrelevant.

If the accused is found responsible for violating the Code of Conduct, then in those cases involving a victim, that victim may submit an impact statement. If the student charged does not to appear for the hearing, the hearing will be held in their absence. Failure to appear will be noted without prejudice. Findings will be based on information presented at the hearing. Material witnesses will be present during the introductory comments of the hearing, including the honesty statement*, at which point they will be excused until time to give their testimony. Witnesses will be excused upon completion of testimony and questioning, but they may be asked to remain available for recall. The complainant and respondent remain throughout the hearing. At the conclusion of the hearing, all parties will be dismissed except for the hearing panel so they may deliberate and reach a decision. A student’s past disciplinary record will be revealed to the hearing panel only if the accused is found responsible for the violation of the Code of Conduct under consideration. If the student raises the issue of past behavior during the hearing, the issue is then open to discussion.

The order of presentation at the hearing will be as follows:

- Purpose of the hearing provided by the chair of the hearing panel or university representative.
- The complainant may present an opening statement.
- The responding student may present an opening statement.
- The Title IX investigator will present the investigation report and answer related questions in cases of sexual misconduct.
- The complainant will present evidence and call witnesses.
- The responding student will present evidence and call witnesses.
- At the conclusion of each witness statement, the witness may be questioned by the hearing panel, the representative from the Office of Student Affairs, the accused student either directly or indirectly, and the complainant, either directly or indirectly.
- The complainant may make a closing statement.
- The responding student may make a closing statement.
- All parties are dismissed for hearing panel deliberation.

The hearing may accommodate concerns for the personal safety, well-being or fears of confronting the complainant, accused student, or other witnesses. Procedures or the hearing environment may be modified as determined in the sole judgment of the Vice President for Student Affairs, or designee, to be appropriate.

Standard of Evidence

Formal rules of procedure and evidence typically found in a court of law do not apply to disciplinary matters. For a student to be found responsible, the evidence must support a determination that it is “more likely true than not” (known as the “preponderance of the evidence standard”) that a violation of the Code of Conduct occurred. Except, however, to impose the sanction of expulsion, the alleged violation of the Code of Conduct must be proven by “clear and convincing evidence”, which requires proof that it is substantially more likely true than not that the alleged violation occurred. Hearsay evidence and personal testimony may be considered but will be weighed accordingly.

Possible Sanctions

Although not intended to be inclusive, the following are possible sanctions that may be imposed either singularly or in combination for a student or group/organization if a violation of the Student Code is found.

- Warning is an oral or written warning that further violations of university regulations could result in additional disciplinary action.
- Alternative Dispute Resolution is a process by which a respondent is assigned to resolve an issue that has come to the Office of Student Affairs collaboratively with the other people involved instead of having a hearing officer issue other sanctions. Any instances of alleged sexual misconduct and some other alleged violations are inappropriate for alternative dispute resolution.
- Loss of Privileges is a limitation on a student's privileges for a period of time and may include but not be limited to the denial of the use of facilities or access to parts of campus, denial of the right to represent the university, or denial of participation in extracurricular activities.
- Voluntary Project is community service or an education class or project beneficial to the individual, campus or community.
- Restitution is the actual cost of repair or replacement for loss, damage or injury to property or person, such as medical bills.
- **Fines:** Financial assessment imposed by the hearing officer or panel.
- **Parental Notification:** The federal Family Educational Rights and Privacy Act permits educational institutions to notify parents of students under the age of 21 when a student has been found responsible for an alcohol or drug related violation. Students are generally notified when parents are contacted and are given the opportunity to contact the parents first.
- Deactivation is a group's loss of all privileges, including Oregon Tech recognition, for a specified period of time.
- Enrollment Hold is a "hold" on enrollment privileges for failure to meet with the Dean of Students or other hearing officer or for failure to comply with assigned conditions or complete assigned sanctions. This hold can prevent the adding or dropping of classes or enrolling for subsequent terms.
- Cancellation of Enrollment occurs when a previous hold has been cleared with the condition that the enrollment will be canceled for failure to meet the conditions of the clearance. If canceled, the refund of tuition or fees will be subject to the university's normal withdrawal policy.
- Class Removal occurs when a student is dropped from a class or moved to another section of a class. The dean of students has the right to restrict a student from class pending a hearing for alleged violations of the Code of Conduct occurring in the classroom that substantially interfere with teaching or other students' ability to learn.
- Graduation Hold is a hold on a student's participation in graduation exercises and diploma for failure to respond to a request to meet with the dean of students or other hearing officer, or for noncompliance with disciplinary sanctions. The Vice President of Student Affairs may place a graduation hold.
- **Revocation of Degree:** an academic degree previously awarded by the university may be revoked on proof that it was obtained by fraud or that a significant part of the work submitted in fulfillment of, and indispensable to, the requirements for such degree was plagiarized. The Academic Progress and Petitions Committee may, upon appeal of a university graduate subjected to a degree revocation, stipulate the requirements for legitimately obtaining the degree.
- **Campus No Contact Order:** The student may not knowingly interact with another student or member of the university community specified by the sanctioning person or body. The restriction prohibits the restrained student from purposefully interacting with the protected person, over the phone, over any electronic source (including email, text messaging, social networks or any other electronic source), in person, through a third party and through the mail. Unless specifically stated otherwise in the sanction, the restriction does not prohibit the restrained student from unintentionally, or out of necessity, being in the same building or vicinity as the protected student (e.g., eating in the dining hall, bookstore). The sanctioning person or body will determine the time limit for this sanction.
- Residence Hall Suspension is the separation of a student from the residence halls for a specified period of time, after which the student is eligible to return. Conditions for readmission may be specified.
- Housing Expulsion is the permanent separation of a student from the residence halls.
- Conduct Probation Level 1 is a specified period of time during which the student is placed on formal notice that they are not in good standing with the university and that further violations of university regulations will subject them to suspension or expulsion from the university. Probation may include additional conditions or sanctions. The probationary status and conditions are documented in writing.
- Conduct Probation Level 2 adds to Level 1 the stipulation that students are prohibited from participating in any extracurricular activities not directly associated with academics (e.g., intramural sports, attending athletic events, student organizations/clubs/associations, leadership positions within housing or fraternities/sororities or other organizations). Students must apply to get off Conduct Probation Level 2 by submitting documentation of their significant proactive efforts to become good citizens of the community and engage in responsible, productive behavior.

- Disciplinary Suspension is the exclusion from enrollment in classes and other privileges or activities for a definite period of time and until the conditions which are set forth in the hearing outcome letter are met. Notification of disciplinary suspension will be provided in writing.
- Examples of violations for which the university will strongly recommend suspension include, but are not limited to, the following: selling or otherwise providing alcohol to underage students, selling or distributing illicit drugs, sexual violence/misconduct, hazing, actions that result in the serious injury or death of another person(s), violation of a university-imposed No Contact Order or repeated alcohol or drug offenses that jeopardize the individual's or community's educational opportunities or safety. Students who are suspended from Oregon Tech are not permitted on campus or in university buildings, facilities or activities at any time for any reason during the period of suspension, unless otherwise directed by the Vice President for Student Affairs, the Dean of Students or their designee. Conditions to conclude a suspension shall be stated in the written notification, including the approval of the Office of Student Affairs. Notation on the transcript is not made; however, a permanent record of the action is maintained in the student's record in the Office of Student Affairs. Any refund of tuition or fees will be subject to the university's normal withdrawal policy.
- Deferred suspension is a suspension that may be deferred pending successful completion of the conditions to remain in school. Failure to complete the conditions in the given period of time will result in suspension from the university. Notation on the transcript is not made; however, a record of the action is maintained in the student's record in the Office of Student Affairs for the entire seven-year period for which such records are retained (referenced in Section VII, above).
- Disciplinary Expulsion is the termination of student status for an indefinite period. The conditions or readmission, if any, shall be stated in the hearing outcome letter. Notification of disciplinary expulsion will be provided in writing. Any refund of tuition or fees will be subject to the university's normal withdrawal policy.
- Admission and Reinstatement Requirements are conditions for admission given to students whose admission requires a clearance from Office of Student Affairs (see Section IX).

Range of Protective Measures Available to a Victim Alleging Misconduct

Protective measures that are made available to the victim include campus no contact orders, adjustment to academic schedules and connecting the victim with resources both on and off campus, ranging from counseling services to victim's advocacy organizations.

Non-Title IX Policy and Procedure for the Resolution of VAWA Offenses for Employee Respondents

Non-Title IX Policy and Procedure for the Resolution of VAWA offenses for Employee Respondents that did not meet the threshold for Title IX but are still being resolved by the institution are governed under interim policy OIT-01-004, Prohibited Sexual Misconduct. Under this interim policy, employees accused of domestic violence, dating violence, sexual assault and stalking follow a process similar to the one used for students, however the resolution of the process is different, as outlined below:

Filing a misconduct complaint can generally be done in one of two ways. For misconduct perpetrated by an employee or non-student member of the Oregon Tech community may be reported to the Office of Human Resources. Complaints can also be filed either with Campus Safety at 541.891.2143 or online through TECHweb under "Campus Resources". Under the Campus Resources tab, click on "Report an Incident". The Title IX Coordinator and the Associate Vice President of Human Resources will be responsible for determining which policy applies based upon the nature of the alleged conduct.

The complainant has the option of pursuing either a formal or informal resolution to a complaint, as defined below. The employee respondent has the right to union representation during the process. For classified employees this representation would be provided by Service Employees International Union, or SEIU, while faculty employees are represented by the American Association of University Professors, or AAUP. The Title IX Coordinator or Associate Vice President of Human Resources will review complaints received and set up an intake interview with the complainant. If the complainant is anonymous, and depending on the amount of information given, every effort will be made to move forward. Otherwise, the complaint will be kept on file.

If an investigation is requested, the complainant has the right to move forward with either a formal or informal resolution depending on the nature of the complaint. The resolutions are defined as follows:

- **Formal Resolution:** The Title IX Coordinator or the Associate Vice President of Human Resources, or their designee, invites the respondent to participate in an intake interview. The respondent will be provided with their rights, resources and options during the investigative process, supportive measures and a trained Title IX advisor of their choice. They will be told the difference between a law enforcement investigation and an administrative investigation. During the investigation, evidence will be collected, an investigation report created and the report and any statements and evidence will be attached as exhibits. If the Title IX Coordinator initiates the investigation, they will complete a report and submit it to the Associate Vice President of Human Resources for the final determination and possible sanctions.

Once those sanctions are determined, the Associate Vice President of Human Resources will meet individually with the complainant and respondent regarding the determination of responsibility and any possible sanctions.

- **Informal Resolution:** If the parties involved come to a resolution agreement, the matter is resolved informally and the case is closed. If the parties involved do not come to an agreement, the option to move to a formal resolution is provided. The complainant can withdraw from or close the complaint with the option to reopen as long as the respondent has affiliation with Oregon Tech. Additionally, supportive measures can be made and the option of a no-contact directive can be provided.

Campus Sex Crimes Prevention Act and Sex Offender Registration

The federal Campus Sex Crimes Prevention Act of 2000 (CSCPA), amends the Jacob Wetterling Crimes Against Children and Sexually Violent Offender Registration Act. CSCPA provides special requirements relating to registration and community notification for sex offenders who are enrolled in or work at an institution of higher education. In addition to the Wetterling Act, CSCPA also amended the Clery Act, an annual crime-reporting law and the Family Educational Rights and Privacy Act of 1974 (FERPA) to allow the disclosure of this information regarding students. As provided in the Wetterling Act, any person required to register under a state sex-offender program must notify the state regarding each institution of higher education in that state at which the person is employed, carries on a vocation, or is a student. They also must alert the state of any change in enrollment or employment status. The act also amends the Jeanne Clery Disclosure of Campus Security Policy and Campus Crime Statistics Act to require institutions of higher education to issue a statement, in addition to other disclosures required under that act, to advise the campus community where to obtain law enforcement agency information provided by a state concerning registered sex offenders. Under state law, sex-offender information may be obtained through local law enforcement agencies and the Oregon State Police and requestors may access this information using a variety of search criteria, such as name, address, ZIP code or county. For the state of Oregon sex offender requirements and other sex offender information see the following web site:

<https://www.oregon.gov/osp/programs/SOR/Pages/offenderinformation.aspx>.

Hazing Policy Statement

Oregon Tech strictly prohibits hazing in all forms. Policy number OIT-10-010, the Interim Anti-Hazing Policy, establishes clear definitions, reporting mechanisms, disciplinary consequences, and prevention requirements to ensure compliance with the federal Stop Campus Hazing Act of 2025 and Oregon Revised Statutes 163.197 and 350.259. Hazing undermines the safety, dignity and academic mission of the university and will not be tolerated.

Health Professional Reporting of Crimes and Annual Crime Statistics

The Integrated Student Health Center is comprised of staff who provide professional counseling and psychological services for students. In support of a victim of a crime, staff will encourage and assist their client with how to report a crime to Campus Safety or local police agencies. This reporting will be done on a voluntary or confidential basis. There is also an option for the health professional to anonymously capture crime statistics disclosed confidentially during a given session.

Campus Safety Activity Report

Offenses – Klamath Falls (* / +)

Classification	2024				2023				2022			
	On-Campus	On-Campus Student Housing	Non-campus	Public Property	On-Campus	On-Campus Student Housing	Non-campus	Public Property	On-Campus	On-Campus Student Housing	Non-campus	Public Property
Murder/Non-negligent Manslaughter	0	0	0	0	0	0	0	0	0	0	0	0
Negligent Manslaughter	0	0	0	0	0	0	0	0	0	0	0	0
Sex Offenses												
Rape	0	0	0	0	0	0	0	0	3	2	0	0
Statutory Rape	0	0	0	0	0	0	0	0	0	0	0	0
Incest	0	0	0	0	0	0	0	0	0	0	0	0
Fondling	1	1	0	0	0	0	0	0	1	0	0	0
Dating Violence	1	1	0	0	0	0	0	0	1	1	0	0
Domestic Violence	0	0	0	0	0	0	0	0	0	0	0	1
Stalking	1	0	0	0	0	0	0	0	3	0	0	0
Aggravated Assault	0	0	0	0	1	0	0	0	0	0	0	0
Arson	0	0	0	0	0	0	0	0	0	0	0	0
Robbery	0	0	0	0	0	0	0	0	0	0	0	0
Motor Vehicle Theft	0	0	0	0	0	0	0	0	0	0	0	1
Burglary	0	0	0	0	1	1	0	0	0	0	0	0

“*” = In previous year Annual Security Reports, the crimes of Theft, Criminal Mischief, Criminal Trespass and Disorderly Conduct were included as part of the annual statistics. During a compliance program review beginning in early 2025, the university was advised to remove statistics from the annual report that are not required to be disclosed by the Clery Act. It should be noted that Larceny-Theft associated with reported Hate Crimes is still included as required by the Clery Act.

“+” = The previous version of the 2024 Annual Security and Fire Report listed both the category of Aggravated Assault as well as the category of Assault in the table above. Assault statistics are not part of the Clery Act; only Aggravated Assaults are counted. Because of this, in the above edited table, the category of Assault has been removed. The assaults noted in the previous version of this report for calendar year 2022 do not meet the Clery Act definition of Aggravated Assault, which is defined as “an unlawful attack by one person upon another for the purpose of inflicting severe or aggravated bodily injury”. Due to no severe or aggravated bodily injury occurring, those statistics were not included in the Aggravated Assault category above.

Hate Crimes – Klamath Falls

Classification	2024				2023				2022			
	On-Campus	On-Campus Student Housing	Non-campus	Public Property	On-Campus	On-Campus Student Housing	Non-campus	Public Property	On-Campus	On-Campus Student Housing	Non-campus	Public Property
Murder/Non-negligent Manslaughter												
Race	0	0	0	0	0	0	0	0	0	0	0	0
Religion	0	0	0	0	0	0	0	0	0	0	0	0
Sexual Orientation	0	0	0	0	0	0	0	0	0	0	0	0
Gender	0	0	0	0	0	0	0	0	0	0	0	0
Gender Identity	0	0	0	0	0	0	0	0	0	0	0	0
Ethnicity	0	0	0	0	0	0	0	0	0	0	0	0
National Origin	0	0	0	0	0	0	0	0	0	0	0	0
Disability	0	0	0	0	0	0	0	0	0	0	0	0
Sexual Assault												
Race	0	0	0	0	0	0	0	0	0	0	0	0
Religion	0	0	0	0	0	0	0	0	0	0	0	0
Sexual Orientation	0	0	0	0	0	0	0	0	0	0	0	0

Gender	0	0	0	0	0	0	0	0	0	0	0	0
Gender Identity	0	0	0	0	0	0	0	0	0	0	0	0
Ethnicity	0	0	0	0	0	0	0	0	0	0	0	0
National Origin	0	0	0	0	0	0	0	0	0	0	0	0
Disability	0	0	0	0	0	0	0	0	0	0	0	0
Robbery												
Race	0	0	0	0	0	0	0	0	0	0	0	0
Religion	0	0	0	0	0	0	0	0	0	0	0	0
Sexual Orientation	0	0	0	0	0	0	0	0	0	0	0	0
Gender	0	0	0	0	0	0	0	0	0	0	0	0
Gender Identity	0	0	0	0	0	0	0	0	0	0	0	0
Ethnicity	0	0	0	0	0	0	0	0	0	0	0	0
National Origin	0	0	0	0	0	0	0	0	0	0	0	0
Disability	0	0	0	0	0	0	0	0	0	0	0	0
Aggravated Assault												
Race	0	0	0	0	0	0	0	0	0	0	0	0
Religion	0	0	0	0	0	0	0	0	0	0	0	0
Sexual Orientation	0	0	0	0	0	0	0	0	0	0	0	0
Gender	0	0	0	0	0	0	0	0	0	0	0	0
Gender Identity	0	0	0	0	0	0	0	0	0	0	0	0
Ethnicity	0	0	0	0	0	0	0	0	0	0	0	0
National Origin	0	0	0	0	0	0	0	0	0	0	0	0
Disability	0	0	0	0	0	0	0	0	0	0	0	0
Burglary												
Race	0	0	0	0	0	0	0	0	0	0	0	0
Religion	0	0	0	0	0	0	0	0	0	0	0	0
Sexual Orientation	0	0	0	0	0	0	0	0	0	0	0	0
Gender	0	0	0	0	0	0	0	0	0	0	0	0
Gender Identity	0	0	0	0	0	0	0	0	0	0	0	0
Ethnicity	0	0	0	0	0	0	0	0	0	0	0	0
National Origin	0	0	0	0	0	0	0	0	0	0	0	0
Disability	0	0	0	0	0	0	0	0	0	0	0	0
Motor Vehicle Theft												
Race	0	0	0	0	0	0	0	0	0	0	0	0
Religion	0	0	0	0	0	0	0	0	0	0	0	0
Sexual Orientation	0	0	0	0	0	0	0	0	0	0	0	0
Gender	0	0	0	0	0	0	0	0	0	0	0	0
Gender Identity	0	0	0	0	0	0	0	0	0	0	0	0
Ethnicity	0	0	0	0	0	0	0	0	0	0	0	0
National Origin	0	0	0	0	0	0	0	0	0	0	0	0
Disability	0	0	0	0	0	0	0	0	0	0	0	0
Arson												
Race	0	0	0	0	0	0	0	0	0	0	0	0
Religion	0	0	0	0	0	0	0	0	0	0	0	0
Sexual Orientation	0	0	0	0	0	0	0	0	0	0	0	0
Gender	0	0	0	0	0	0	0	0	0	0	0	0
Gender Identity	0	0	0	0	0	0	0	0	0	0	0	0
Ethnicity	0	0	0	0	0	0	0	0	0	0	0	0
National Origin	0	0	0	0	0	0	0	0	0	0	0	0
Disability	0	0	0	0	0	0	0	0	0	0	0	0
Larceny-Theft												
Race	0	0	0	0	0	0	0	0	0	0	0	0
Religion	0	0	0	0	0	0	0	0	0	0	0	0
Sexual Orientation	0	0	0	0	0	0	0	0	0	0	0	0
Gender	0	0	0	0	0	0	0	0	0	0	0	0
Gender Identity	0	0	0	0	0	0	0	0	0	0	0	0
Ethnicity	0	0	0	0	0	0	0	0	0	0	0	0
National Origin	0	0	0	0	0	0	0	0	0	0	0	0
Disability	0	0	0	0	0	0	0	0	0	0	0	0
Simple Assault												
Race	0	0	0	0	0	0	0	0	0	0	0	0
Religion	0	0	0	0	0	0	0	0	0	0	0	0
Sexual Orientation	0	0	0	0	0	0	0	0	0	0	0	0
Gender	0	0	0	0	0	0	0	0	0	0	0	0
Gender Identity	0	0	0	0	0	0	0	0	0	0	0	0
Ethnicity	0	0	0	0	0	0	0	0	0	0	0	0
National Origin	0	0	0	0	0	0	0	0	0	0	0	0
Disability	0	0	0	0	0	0	0	0	0	0	0	0

Intimidation												
Race	0	0	0	0	0	0	0	0	0	0	0	0
Religion	0	0	0	0	0	0	0	0	0	0	0	0
Sexual Orientation	0	0	0	0	0	0	0	0	0	0	0	0
Gender	0	0	0	0	0	0	0	0	0	0	0	0
Gender Identity	0	0	0	0	0	0	0	0	0	0	0	0
Ethnicity	0	0	0	0	0	0	0	0	0	0	0	0
National Origin	0	0	0	0	0	0	0	0	0	0	0	0
Disability	0	0	0	0	0	0	0	0	0	0	0	0
Destruction/Damage Vandalism of Property												
Race	0	0	0	0	0	0	0	0	0	0	0	0
Religion	0	0	0	0	0	0	0	0	0	0	0	0
Sexual Orientation	0	0	0	0	0	0	0	0	0	0	0	0
Gender	0	0	0	0	0	0	0	0	0	0	0	0
Gender Identity	0	0	0	0	0	0	0	0	0	0	0	0
Ethnicity	0	0	0	0	0	0	0	0	0	0	0	0
National Origin	0	0	0	0	0	0	0	0	0	0	0	0
Disability	0	0	0	0	0	0	0	0	0	0	0	0

Offense Type	2024						2023						2022					
	Campus		Residence Halls		Non-Campus		Campus		Residence Halls		Non-Campus		Campus		Residence Halls		Non-Campus	
	AR	REF	AR	REF	AR	REF	AR	REF	AR	REF	AR	REF	AR	REF	AR	REF	AR	REF
Disciplinary Actions or Arrests																		
Liquor Law Violations	0	4	0	4	0	0	1	3	1	3	0	0	1	4	1	2	0	0
Drug Violations	1	5	0	5	0	0	1	1	1	1	0	0	0	4	0	4	0	0
Weapons Violations	0	0	0	0	0	0	0	0	0	0	0	0	0	0	0	0	0	0

Notation Legend

AR	= Denotes an arrest for liquor, drug and weapons violations
REF	= Denotes a referral for liquor, drug and weapons violations

Unfounded Crimes

2024	No unfounded crimes reported
2023	No unfounded crimes reported
2022	No unfounded crimes reported

Campus Safety Activity Report

Offenses – Portland Metro (* / +)

Classification	2024			2023			2022		
	On-Campus	Non-campus	Public Property	On-Campus	Non-campus	Public Property	On-Campus	Non campus	Public Property
Murder/Non-negligent Manslaughter	0	0	0	0	0	0	0	0	0
Negligent Manslaughter	0	0	0	0	0	0	0	0	0
Sex Offenses									
Rape	0	0	0	0	0	0	0	0	0
Statutory Rape	0	0	0	0	0	0	0	0	0
Incest	0	0	0	0	0	0	0	0	0
Fondling	0	0	0	0	0	0	0	0	0
Dating Violence	0	0	0	0	0	0	0	0	0
Domestic Violence	0	0	1	0	0	0	0	0	0
Stalking	0	0	0	0	0	0	0	0	0
Aggravated Assault	0	0	0	0	0	0	0	0	0
Arson	0	0	0	0	0	0	0	0	0
Robbery	0	0	0	0	0	0	0	0	0
Motor Vehicle Theft	0	0	0	0	0	0	0	0	0
Burglary	0	1	0	0	0	0	0	0	0

“*” = In previous year Annual Security Reports, the crimes of Theft, Criminal Mischief, Criminal Trespass and Disorderly Conduct were included as part of the annual statistics. During a compliance program review beginning in early 2025, the university was advised to remove statistics from the annual report that are not required to be disclosed by the Clery Act. It should be noted that Larceny-Theft associated with reported Hate Crimes is still included as required by the Clery Act.

“+” = The previous version of the 2024 Annual Security and Fire Report listed both the category of Aggravated Assault as well as the category of Assault in the table above. Assault statistics are not part of the Clery Act; only Aggravated Assaults are counted. Because of this, in the above edited table, the category of Assault has been removed. The assaults noted in the previous version of this report for calendar year 2022 do not meet the Clery Act definition of Aggravated Assault, which is defined as “an unlawful attack by one person upon another for the purpose of inflicting severe or aggravated bodily injury”. Due to no severe or aggravated bodily injury occurring, those statistics were not included in the Aggravated Assault category above.

Hate Crimes – Portland Metro

Classification	2024			2023			2022		
	On-Campus	Non-campus	Public Property	On-Campus	Non-campus	Public Property	On-Campus	Non campus	Public Property
Murder/Non-negligent Manslaughter									
Race	0	0	0	0	0	0	0	0	0
Religion	0	0	0	0	0	0	0	0	0
Sexual Orientation	0	0	0	0	0	0	0	0	0
Gender	0	0	0	0	0	0	0	0	0
Gender Identity	0	0	0	0	0	0	0	0	0
Ethnicity	0	0	0	0	0	0	0	0	0
National Origin	0	0	0	0	0	0	0	0	0
Disability	0	0	0	0	0	0	0	0	0
Sexual Assault									
Race	0	0	0	0	0	0	0	0	0
Religion	0	0	0	0	0	0	0	0	0
Sexual Orientation	0	0	0	0	0	0	0	0	0
Gender	0	0	0	0	0	0	0	0	0
Gender Identity	0	0	0	0	0	0	0	0	0
Ethnicity	0	0	0	0	0	0	0	0	0
National Origin	0	0	0	0	0	0	0	0	0
Disability	0	0	0	0	0	0	0	0	0

Robbery									
Race	0	0	0	0	0	0	0	0	0
Religion	0	0	0	0	0	0	0	0	0
Sexual Orientation	0	0	0	0	0	0	0	0	0
Gender	0	0	0	0	0	0	0	0	0
Gender Identity	0	0	0	0	0	0	0	0	0
Ethnicity	0	0	0	0	0	0	0	0	0
National Origin	0	0	0	0	0	0	0	0	0
Disability	0	0	0	0	0	0	0	0	0
Aggravated Assault									
Race	0	0	0	0	0	0	0	0	0
Religion	0	0	0	0	0	0	0	0	0
Sexual Orientation	0	0	0	0	0	0	0	0	0
Gender	0	0	0	0	0	0	0	0	0
Gender Identity	0	0	0	0	0	0	0	0	0
Ethnicity	0	0	0	0	0	0	0	0	0
National Origin	0	0	0	0	0	0	0	0	0
Disability	0	0	0	0	0	0	0	0	0
Burglary									
Race	0	0	0	0	0	0	0	0	0
Religion	0	0	0	0	0	0	0	0	0
Sexual Orientation	0	0	0	0	0	0	0	0	0
Gender	0	0	0	0	0	0	0	0	0
Gender Identity	0	0	0	0	0	0	0	0	0
Ethnicity	0	0	0	0	0	0	0	0	0
National Origin	0	0	0	0	0	0	0	0	0
Disability	0	0	0	0	0	0	0	0	0
Motor Vehicle Theft									
Race	0	0	0	0	0	0	0	0	0
Religion	0	0	0	0	0	0	0	0	0
Sexual Orientation	0	0	0	0	0	0	0	0	0
Gender	0	0	0	0	0	0	0	0	0
Gender Identity	0	0	0	0	0	0	0	0	0
Ethnicity	0	0	0	0	0	0	0	0	0
National Origin	0	0	0	0	0	0	0	0	0
Disability	0	0	0	0	0	0	0	0	0
Arson									
Race	0	0	0	0	0	0	0	0	0
Religion	0	0	0	0	0	0	0	0	0
Sexual Orientation	0	0	0	0	0	0	0	0	0
Gender	0	0	0	0	0	0	0	0	0
Gender Identity	0	0	0	0	0	0	0	0	0
Ethnicity	0	0	0	0	0	0	0	0	0
National Origin	0	0	0	0	0	0	0	0	0
Disability	0	0	0	0	0	0	0	0	0
Larceny-Theft									
Race	0	0	0	0	0	0	0	0	0
Religion	0	0	0	0	0	0	0	0	0
Sexual Orientation	0	0	0	0	0	0	0	0	0
Gender	0	0	0	0	0	0	0	0	0
Gender Identity	0	0	0	0	0	0	0	0	0
Ethnicity	0	0	0	0	0	0	0	0	0
National Origin	0	0	0	0	0	0	0	0	0
Disability	0	0	0	0	0	0	0	0	0
Simple Assault									
Race	0	0	0	0	0	0	0	0	0
Religion	0	0	0	0	0	0	0	0	0
Sexual Orientation	0	0	0	0	0	0	0	0	0
Gender	0	0	0	0	0	0	0	0	0
Gender Identity	0	0	0	0	0	0	0	0	0
Ethnicity	0	0	0	0	0	0	0	0	0
National Origin	0	0	0	0	0	0	0	0	0
Disability	0	0	0	0	0	0	0	0	0
Intimidation									
Race	0	0	0	0	0	0	0	0	0
Religion	0	0	0	0	0	0	0	0	0
Sexual Orientation	0	0	0	0	0	0	0	0	0

Gender	0	0	0	0	0	0	0	0	0
Gender Identity	0	0	0	0	0	0	0	0	0
Ethnicity	0	0	0	0	0	0	0	0	0
National Origin	0	0	0	0	0	0	0	0	0
Disability	0	0	0	0	0	0	0	0	0
Destruction/ Damage Vandalism of Property									
Race	0	0	0	0	0	0	0	0	0
Religion	0	0	0	0	0	0	0	0	0
Sexual Orientation	0	0	0	0	0	0	0	0	0
Gender	0	0	0	0	0	0	0	0	0
Gender Identity	0	0	0	0	0	0	0	0	0
Ethnicity	0	0	0	0	0	0	0	0	0
National Origin	0	0	0	0	0	0	0	0	0
Disability	0	0	0	0	0	0	0	0	0

Offense Type	2024		2023		2022	
	Campus	Non-Campus	Campus	Non-Campus	Campus	Non-Campus
Disciplinary Actions or Arrests	AR	REF	AR	REF	AR	REF
Liquor Law Violations	0	0	0	0	0	0
Drug Violations	0	0	0	0	0	0
Weapons Violations	0	0	0	0	0	0

Unfounded Crimes

2024	No unfounded crimes reported
2023	No unfounded crimes reported
2022	No unfounded crimes reported

Campus Safety Activity Report

Offenses – Chemeketa Community College Dental Hygiene*

Classification	2024		
	On-Campus	Non-campus	Public Property
Murder/Non-negligent Manslaughter	0	0	0
Negligent Manslaughter	0	0	0
Sex Offenses			
Rape	0	0	0
Statutory Rape	0	0	0
Incest	0	0	0
Fondling	0	0	0
Dating Violence	0	0	0
Domestic Violence	0	0	0
Stalking	0	0	0
Aggravated Assault	0	0	0
Arson	0	0	0
Robbery	0	0	0
Motor Vehicle Theft	0	0	0
Burglary	0	0	0

* = 2024 is the first year that Oregon Tech's Chemeketa Community College's Dental Hygiene is included in the Annual Security and Fire Safety Report.

Hate Crimes – Chemeketa Community College Dental Hygiene

Classification	2024		
	On-Campus	Non-campus	Public Property
Murder/Non-negligent Manslaughter			
Race	0	0	0
Religion	0	0	0
Sexual Orientation	0	0	0
Gender	0	0	0
Gender Identity	0	0	0
Ethnicity	0	0	0
National Origin	0	0	0
Disability	0	0	0
Sexual Assault			
Race	0	0	0
Religion	0	0	0
Sexual Orientation	0	0	0
Gender	0	0	0
Gender Identity	0	0	0
Ethnicity	0	0	0
National Origin	0	0	0
Disability	0	0	0
Robbery			
Race	0	0	0
Religion	0	0	0
Sexual Orientation	0	0	0
Gender	0	0	0
Gender Identity	0	0	0
Ethnicity	0	0	0
National Origin	0	0	0
Disability	0	0	0
Aggravated Assault			
Race	0	0	0
Religion	0	0	0
Sexual Orientation	0	0	0
Gender	0	0	0
Gender Identity	0	0	0
Ethnicity	0	0	0
National Origin	0	0	0
Disability	0	0	0
Burglary			
Race	0	0	0
Religion	0	0	0
Sexual Orientation	0	0	0
Gender	0	0	0
Gender Identity	0	0	0
Ethnicity	0	0	0
National Origin	0	0	0
Disability	0	0	0
Motor Vehicle Theft			
Race	0	0	0
Religion	0	0	0
Sexual Orientation	0	0	0
Gender	0	0	0
Gender Identity	0	0	0
Ethnicity	0	0	0
National Origin	0	0	0
Disability	0	0	0
Arson			
Race	0	0	0
Religion	0	0	0
Sexual Orientation	0	0	0
Gender	0	0	0
Gender Identity	0	0	0

Ethnicity	0	0	0
National Origin	0	0	0
Disability	0	0	0
Larceny-Theft			
Race	0	0	0
Religion	0	0	0
Sexual Orientation	0	0	0
Gender	0	0	0
Gender Identity	0	0	0
Ethnicity	0	0	0
National Origin	0	0	0
Disability	0	0	0
Simple Assault			
Race	0	0	0
Religion	0	0	0
Sexual Orientation	0	0	0
Gender	0	0	0
Gender Identity	0	0	0
Ethnicity	0	0	0
National Origin	0	0	0
Disability	0	0	0
Intimidation			
Race	0	0	0
Religion	0	0	0
Sexual Orientation	0	0	0
Gender	0	0	0
Gender Identity	0	0	0
Ethnicity	0	0	0
National Origin	0	0	0
Disability	0	0	0
Destruction/ Damage Vandalism of Property			
Race	0	0	0
Religion	0	0	0
Sexual Orientation	0	0	0
Gender	0	0	0
Gender Identity	0	0	0
Ethnicity	0	0	0
National Origin	0	0	0
Disability	0	0	0

Offense Type	2024	
	Campus	Non-Campus
Disciplinary Actions or Arrests	AR	REF
Liquor Law Violations	0	0
Drug Violations	0	0
Weapons Violations	0	0

Unfounded Crimes

2024	No unfounded crimes reported
------	------------------------------

Campus Fire Safety Act

Fire Safety Report

The annual fire safety statistics are provided in compliance with the Higher Education Opportunity Act of 2008 which requires the reporting of fire safety information relating to on-campus housing facilities. Information is reviewed and updated on an annual basis. Additional information pertaining to fire safety programs at Oregon Tech can be obtained on the Environmental Health and Safety website. If you have information for inclusion, questions, or remarks contact Environmental Health and Safety at: [Environmental Health and Safety | Oregon Tech \(oit.edu\)](https://ehs.oit.edu)

Fire Safety at Oregon Tech

It is the policy of Oregon Tech to provide employees and students and visitors with the safest possible environment, free from potential fire hazards. The primary goal of the university's fire prevention program is to recognize hazardous conditions and take appropriate action before such conditions result in a fire emergency. This goal is accomplished by conducting periodic fire safety inspections of all university buildings and increasing the fire safety awareness of employees and students by conducting periodic training on basic fire safety. Regular inspections and maintenance are performed on fire safety equipment.

The Higher Education Opportunity Act of 2008 requires Oregon Tech to maintain a fire incident log annually and publish a fire safety report and report fire statistics annually. The fire log includes the date the fire was reported, time and the nature of the fire and general location of each fire. Entries are made within two business days of the receipt of the report.

For the purposes of including a fire in the annual fire safety report, the fire should be reported to any of the following departments/offices: Campus Safety, Environmental Health and Safety, Facilities Services, Housing and Residence Life or any other university employee if a fire occurs in or around campus. The Annual Campus Security and Fire Safety Annual report complies with both the security and fire safety reporting requirements of the Department of Education regulations (34 CFR 668, subparts 46 and 49).

Policy Statement

To minimize the potential for fire in Oregon Tech student housing facilities, it is the policy of Oregon Tech to prohibit the use of the following items inside any university-owned student housing facility:

Portable space heaters, barbecue grills, and related accessories including lighter fluids and lighters, halogen lamps, and other similar products, any open flame device or object including candles, incense sticks and related accessories. Open flames of any kind are prohibited in all residential facilities.

Hot plates, slow cookers, deep fryers, electric skillets, electric woks, griddles, toaster ovens, sandwich makers/grills and other similar products are allowed only in kitchen areas. All Oregon Tech campuses are smoke and tobacco free campuses, smoking is prohibited anywhere on campus property.

Fire Safety Systems in On-Campus Housing

On-campus housing at Oregon Tech consists of the Residence Hall and the Village for Sustainable Living three building complex on the Klamath Falls Campus. It should be noted that the Portland Metro Campus and Chemeketa Community College do not have on campus housing facilities. The Residence Hall and Village for Sustainable Living complex is covered by an integrated automatic sprinkler, detector and alarm system, which is monitored 24 hours a day, seven days a week. Housing facilities have smoke detectors in all student rooms as well as all hallways. Additionally, fire extinguishers are located in all hallways in both the Residence Hall and Village as well entrances to each apartment suite in the Village. Common areas in each building also have sprinklers. Each suite in the Village is protected by fire doors with 20-minute protection ratings. Stairwells are protected by fire rated doors with one-and-a-half-hour protection ratings. The stairwell doors close automatically whenever the fire alarm system is activated.

Student Housings Fire Safety Systems

Oregon Tech Residential Facilities	Residence Hall 3205 Campus Drive	Village Building #1 3205 Campus Drive	Village Building #2 3205 Campus Drive	Village Building #3 3205 Campus Drive
Alarm System Monitored by Off-Site Firm	X	X	X	X
Full Sprinkler System (1)		X	X	X
Partial Sprinkler System (2)	X			
Smoke Detectors	X	X	X	X
Fire Extinguishers	X	X	X	X
Evacuation Plans/Placards	X	X	X	X
Required Fire Evacuation Drills	4	4	4	4
Number of Fire Evacuation Drills	4	4	4	4

1. A full sprinkler system is defined as having sprinklers in both the common areas and individual rooms.
2. Partial sprinkler system is defined as having sprinklers in common areas only.

Fire Extinguishers

All Oregon Tech buildings are equipped with portable fire extinguishers. Most portable fire extinguishers located at Oregon Tech are rated for multiple types of fires. The most common type of fire extinguisher at Oregon Tech is rated as ABC followed by BC fire extinguishers.

Fires are classified into four types: A – ordinary combustibles, B – flammable liquids, C – electrical and D – flammable metals. Fire extinguishers are grouped into five classes (A, B, C, D and K), each of which extinguishes a specific type of fire as shown below:

- **Class A Extinguishers** will extinguish fires in ordinary combustibles, such as wood and paper.
- **Class B Extinguishers** are to be used on fires involving flammable liquids, such as grease, gasoline, oil, etc.
- **Class C Extinguishers** are suitable for use on electrically energized fires.
- **Class D Extinguishers** are designed for use on flammable metals.
- **Class K Extinguishers** are specific for kitchen fires involving burning oil or grease.

Response to Fire and/or Alarms

If a student or staff member discovers or suspects a fire, the nearest fire alarm should be pulled and the student or staff member should exit the building via the closest, safe exit. Evacuating individuals should always attempt to warn others when leaving. On exiting the building, proceed to the nearest Emergency Assembly Point. After safely exiting the building, contact 911 and then contact Campus Safety at 541.891.2143 from a safe location. Individuals should not re-enter the building until the fire department or Campus Safety personnel grant permission. The silencing of a fire alarm does not mean it is safe to return to a building. Campus Safety coordinates with the Klamath Falls Police Department and/or the Klamath County Fire District 1 in the investigation of each fire incident.

Training

All housing occupants (including those with special needs) and Housing and Residence Life staff receive basic fire safety training at the beginning of each academic year. In addition, a program that covers emergency procedures and evacuations is reviewed regularly with the occupants and staff of each respective facility.

Every student room has an emergency evacuation map on the inside of the door, directing occupants to primary and secondary exits. Each individual housing facility participates in four fire evacuation exercises per year.

A fire evacuation exercise is an exercise performed by trained staff to prepare and evaluate the occupants on their efficiency and effectiveness to carry out emergency evacuation procedures. All occupants are required to participate. During a fire evacuation exercise, occupants are to practice safely evacuating the building, gathering at the nearest Emergency Assembly Point and providing any relevant information to emergency responders.

On-Campus Housing Fire Statistics*

2024

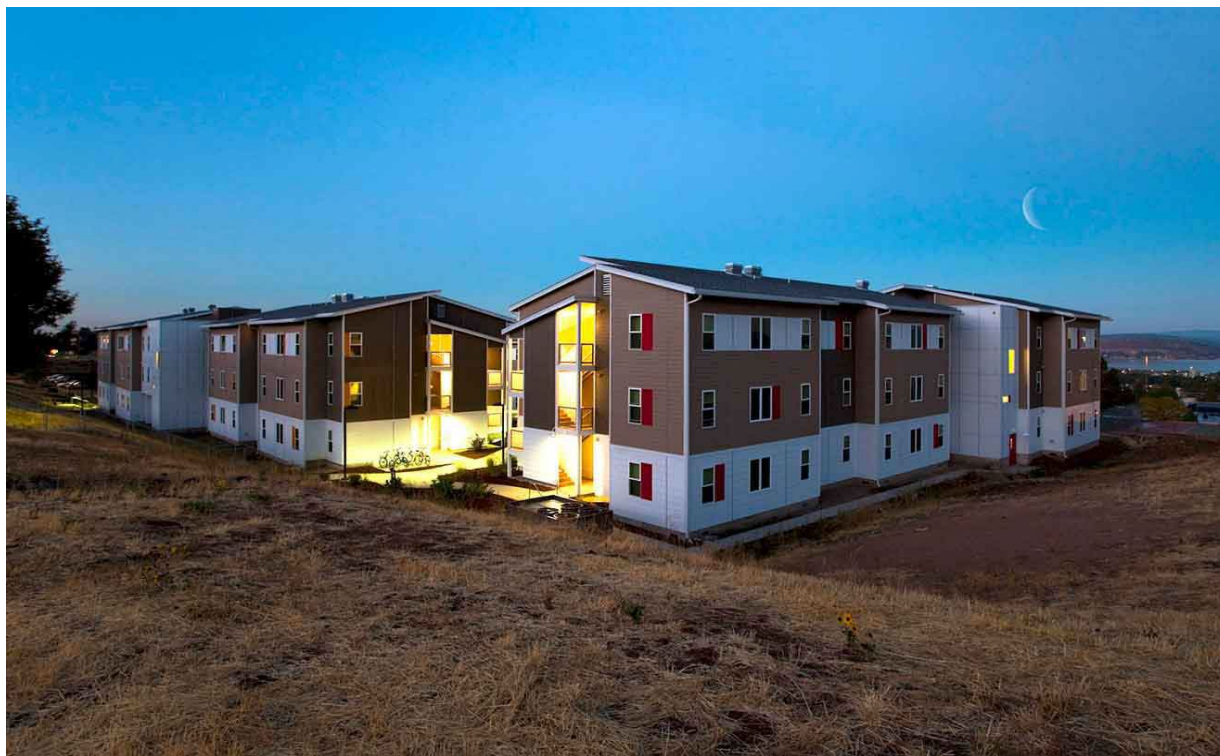
Residential Facilities (Name and Address)	Total Number of Fires	Fire Number	Category and Cause of Fire	Number of Injuries That Required Treatment at a Medical Facility	Number of Deaths Related to a Fire	Value of Property Damage Caused by Fire (in USD)
Residence Hall, 3205 Campus Drive	0	N/A	N/A	0	0	N/A
Village Building #1, 3205 Campus Drive	0	N/A	N/A	0	0	N/A
Village Building #2, 3205 Campus Drive	0	N/A	N/A	0	0	N/A
Village Building #3, 3205 Campus Drive	0	N/A	N/A	0	0	N/A

2023

Residential Facilities (Name and Address)	Total Number of Fires	Fire Number	Category and Cause of Fire	Number of Injuries That Required Treatment at a Medical Facility	Number of Deaths Related to a Fire	Value of Property Damage Caused by Fire (in USD)
Residence Hall, 3205 Campus Drive	0	N/A	N/A	0	0	N/A
Village Building #1, 3205 Campus Drive	0	N/A	N/A	0	0	N/A
Village Building #2, 3205 Campus Drive	0	N/A	N/A	0	0	N/A
Village Building #3, 3205 Campus Drive	0	N/A	N/A	0	0	N/A

2022

Residential Facilities (Name and Address)	Total Number of Fires	Fire Number	Category and Cause of Fire	Number of Injuries That Required Treatment at a Medical Facility	Number of Deaths Related to a Fire	Value of Property Damage Caused by Fire (in USD)
Residence Hall, 3205 Campus Drive	0	N/A	N/A	0	0	N/A
Village Building #1, 3205 Campus Drive	0	N/A	N/A	0	0	N/A
Village Building #2, 3205 Campus Drive	0	N/A	N/A	0	0	N/A
Village Building #3, 3205 Campus Drive	0	N/A	N/A	0	0	N/A



Procedures for Student Housing Evacuation in Case of a Fire

Residential students and Housing employees should do the following when evacuating due to a report of a fire:

- If you hear the fire alarm immediately evacuate the building using the nearest available exit. Do not attempt to fight a fire unless you have been trained to do so.
- Awaken any sleeping roommates. Prepare to evacuate by putting on shoes and a coat if necessary. Feel the doorknob and the door. If it is hot, do not open the door. If it is cool open slowly, and if heat or heavy smoke rushes in, close the door immediately and remain inside.
- When leaving your room, be sure to take your key in case it is necessary to return to the room should conditions in the corridor deteriorate. Make sure to close the door tightly when evacuating. If disabled, move to a refuge area and await for aid with evacuating
- Residence Life staff members who are present on their floors should facilitate the evacuation of their floor before exiting the building and assisting with moving residents and staff away from the building.
- When exiting in smoky conditions, keep your hand on the wall and crawl to the nearest exit. Always know more than one path out of your location and the number of doors between your room and the exit.
- DO NOT USE ELEVATORS. Elevator shafts may fill with smoke or the power may fail, leaving you trapped. Elevators have features that recall and deactivate the elevator during an alarm. Standing and waiting for an elevator wastes valuable time.
- Each resident should report to the Evacuation Assembly Point, located in parking lots A and B. Residence Life staff should report to the Evacuation Assembly Point and make sure that students have cleared the building. Conduct a head count and do not allow re-entry into the building until directed to do so by emergency personnel.

Plans for Improvement to Fire Safety

- In academic year 2024-2025, Oregon Tech implemented designated Evacuation Assembly Points (EAPs) across campus, to include Housing. Barring any unforeseen circumstances such as budgetary restrictions, Oregon Tech's EAP program includes mounting signage at designated EAPs and developing both building floorplans as well as directional signage that will be installed at primary building entrance and exit points to guide building occupants to the closest EAP.
- Also during academic year 2024-2025, Oregon Tech installed new smoke and fire detection modules on each floor of the Residence Hall, replacing the older units with newer and more sensitive detection units. Additionally, a new Honeywell 6820 fire alarm panel was installed allowing for greater control of the alarm system and more accurate information to be displayed relating to alarm activations and system trouble alarms.

