

Essential Studies Evolves

A General Education Review Task Force Update

Oregon **TECH**

CONVOCATION

WEDNESDAY SEPTEMBER 16, 2015

Today

1. Model update
2. Timeline
 - Model development
 - Implementation
3. Governance update



Ken Grant, Lynn, Paul, Linda, Yasha, Russel, Calvo, Rick, Ben, Allas, Diego, Mike, Shellie, Pierce, Hobbs, Justine, Hallie, Dawn, Wilde, Ed, George, Usher, Jim, Wolf, Hulsey, Deb, Myles, Madden, Lynn, Bailey, Peterson-Fairchild, Lowe-Wincentsen, Maupin, Bettencourt-McCarthy, Rick, Andria, Vurkace, Melanie, Sleep, Allas, Diego, Mike, Shellie, Pierce, Hobbs, Justine, Hallie, Dawn, Wilde, Ed, George, Usher, Jim, Wolf, Hulsey, Deb, Myles, Joseph, Douglas, Fairchild, Wincentsen, Beekman, McCarthy, Diba, Vurkace, Melanie, Sleep, Sevigny, Jiru, McCollamer, Maureen, Ashley, McClure, Kellstrom, O'Shaughnessy, Jarrard, Lee, Parratt, Search, Teresa, Rohwer, Roger, Waterman, Beaudry, Walker, Barb, Vukasovich, Kari, Hoyle, Yang, Sandra, Evelyn, Sloan, Mehmet, Ballard, Kevin, Holcomb, Marla, Thomas, Jones, Kris, Charlie, Robyn, Canaday, Elizabeth, Arthur, Ron, Young, Sharon, Joel, Pardy, Sophie, Maev, Rose, Lisa, Nath, LeAnn, Riley, Lloyd, St, Richard, Jeff, Debbie, Molly, Fisher, Jenny, Koehn, Fisher, Kessler, Lynn, Kirby, Bill, Goloski

Model Update – Conceptual Model Presented Spring 2015



Communication



Inquiry &
Analysis



Ethical
Reasoning



Teamwork



Quantitative
Literacy



Diverse
Perspectives

Capstone

Identified by program
Demonstrate all ESLOs in capstone experience(s)

Practice

3

Inquiry Seminar

2 tagged courses in or out of program for each ESLO

Foundation

12

20

3

3

4

3

Model Update—

We heard from departments

exciting
purposeful refreshing
wonderful
creative

“ it helps students see the
value of each course ”

Model Update—

We heard from departments

- Need more definition
- Transfer/advising concerns
- Flexibility desired
- No room for additional credits
- Concerns about erosion of GE
- Lack of breadth
- Lack of depth
- Resource allocation and time requirements
- Why are we doing this?

Model Update –

We heard from ESLO subcommittees

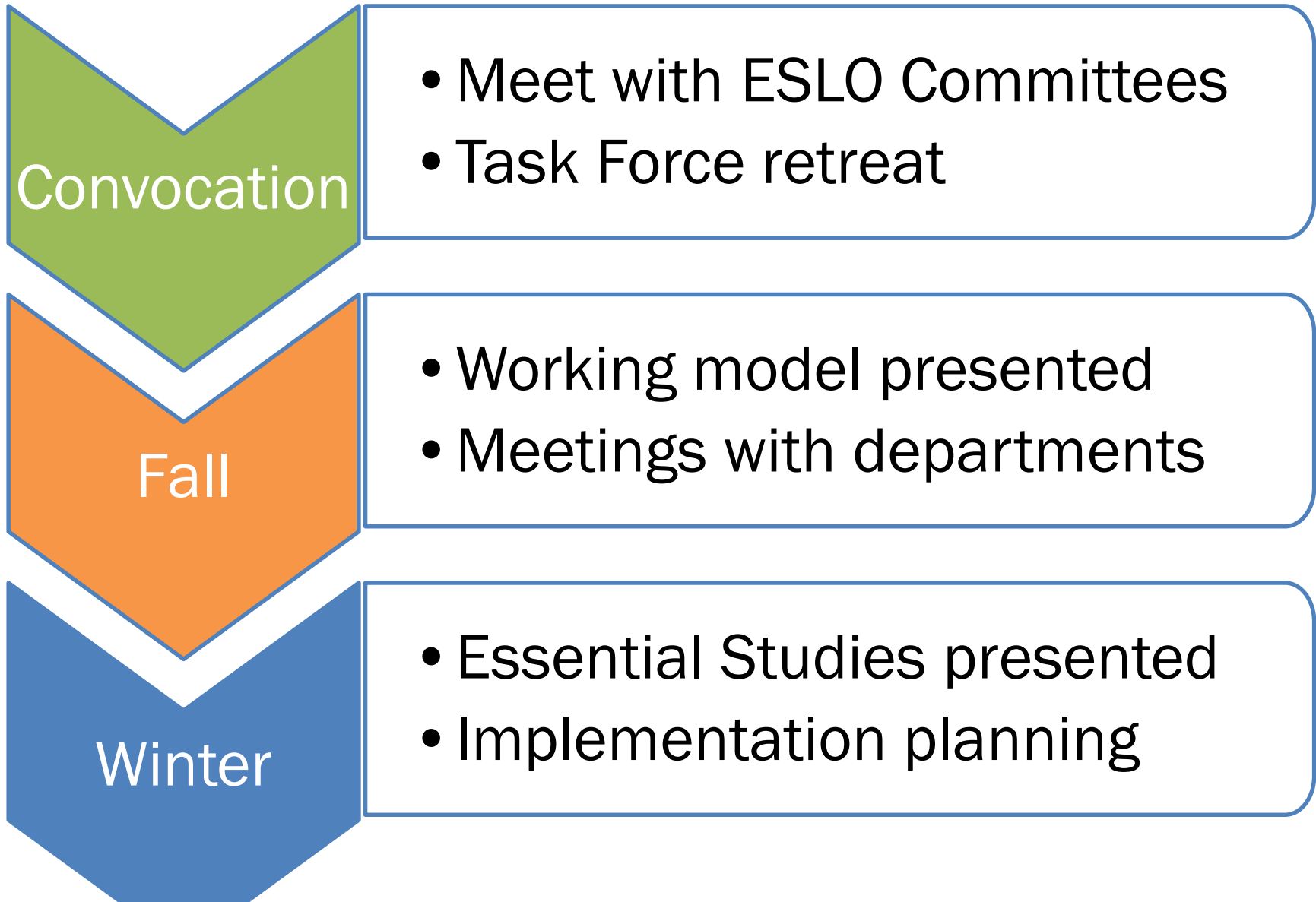
Communication	Writing connected courses
Inquiry and Analysis	Maintain breadth; allow depth
Ethical Reasoning	Foundational ethics course
Teamwork	SPE 221 / additional practice
Quantitative Literacy	Money, World, Power
Diverse Perspectives	Potential foundational courses

Model Update – A revised model

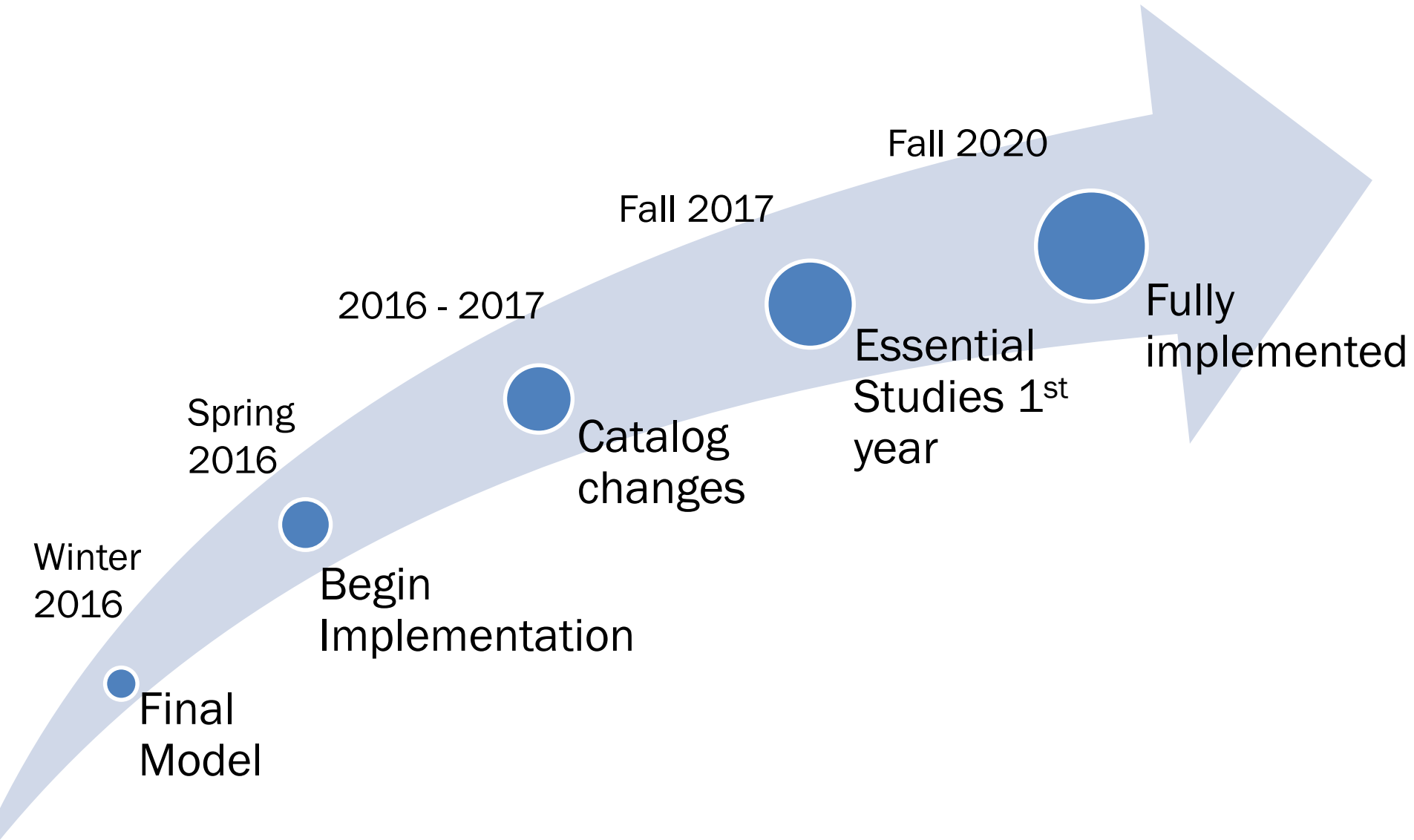
- Modified based on department **feedback**
- Incorporated **recommendations** from ESLO committees
- Looked at the model in context of **rationale**
- Considered **national trends** in GE



Timeline for Model Development



Timeline for Implementation



Steering
Committee

Assessment
Executive
Committee

Commission
on College
Teaching

General
Education
Advisory
Council

Director of Academic Excellence

COM

I&A

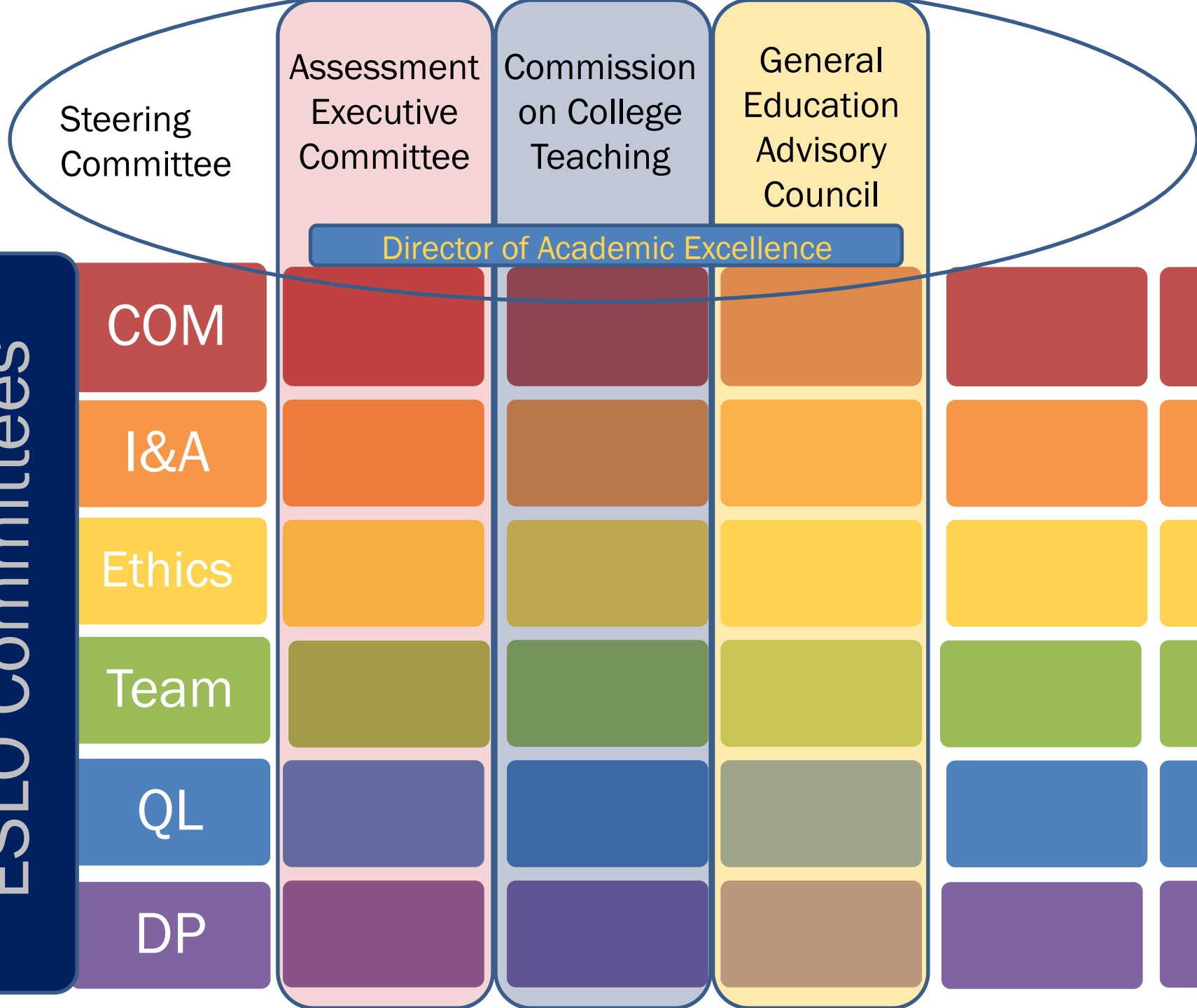
Ethics

Team

QL

DP

ESLO Committees



Final Thoughts

1. Opportunity to map programs and provide feedback
2. The final model will be developed with your continued input
3. Thank you for engaging in this process!

